

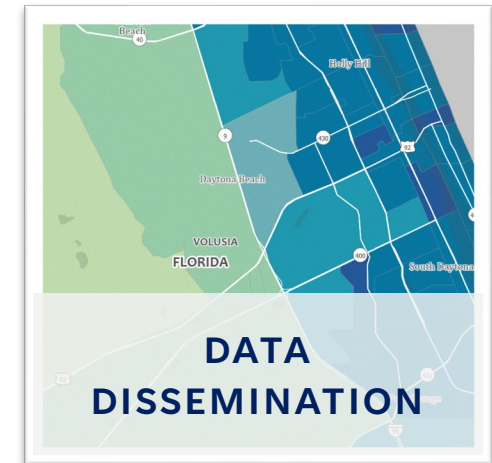
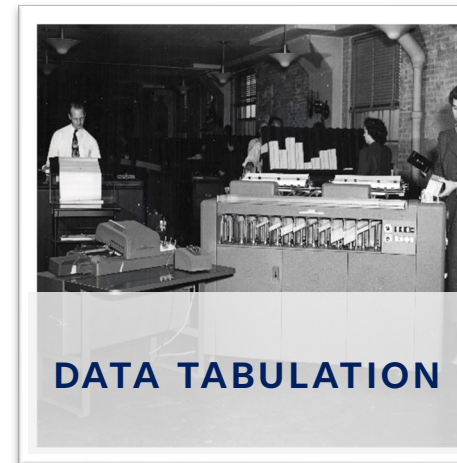
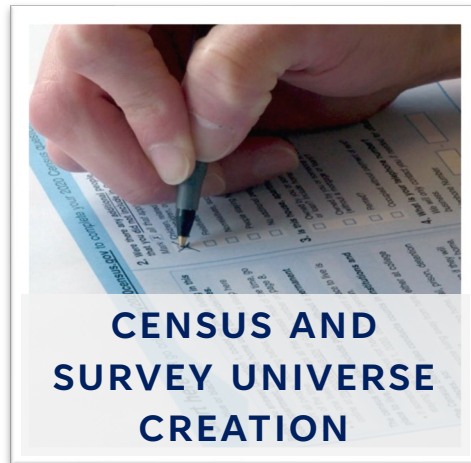
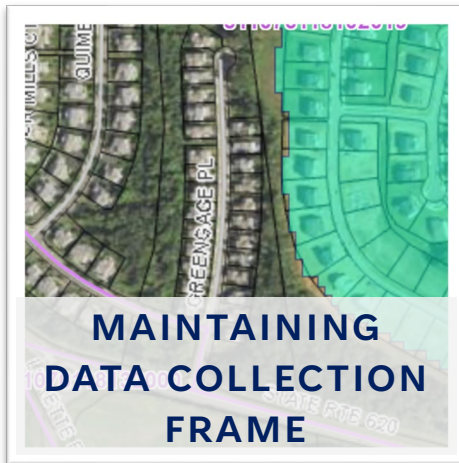
The 2030 Census: Geographic Programs and Improvement Efforts

Andrea Johnson
Deputy Division Chief, Geography Division
U.S. Census Bureau

Massachusetts Informational Briefing

June 16, 2025

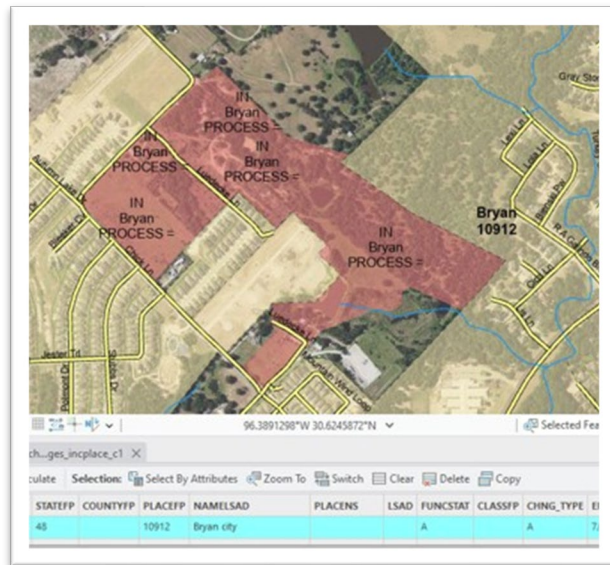
GEOGRAPHY IS THE FOUNDATION FOR CENSUSES AND SURVEYS AT THE CENSUS BUREAU



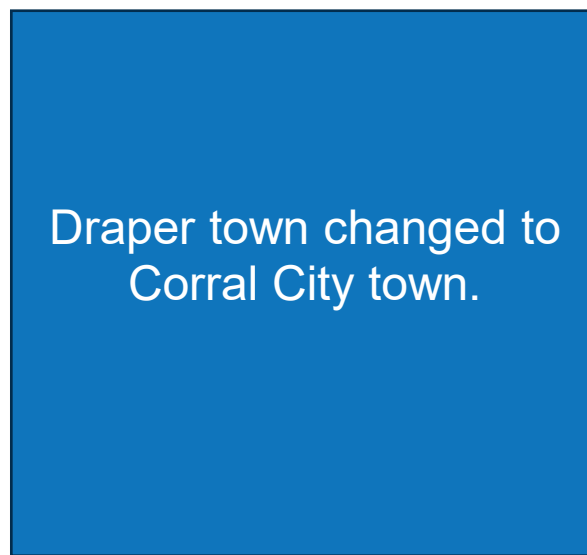
GEOGRAPHIC PARTNERSHIP PROGRAMS

BOUNDARY AND ANNEXATION SURVEY (BAS)

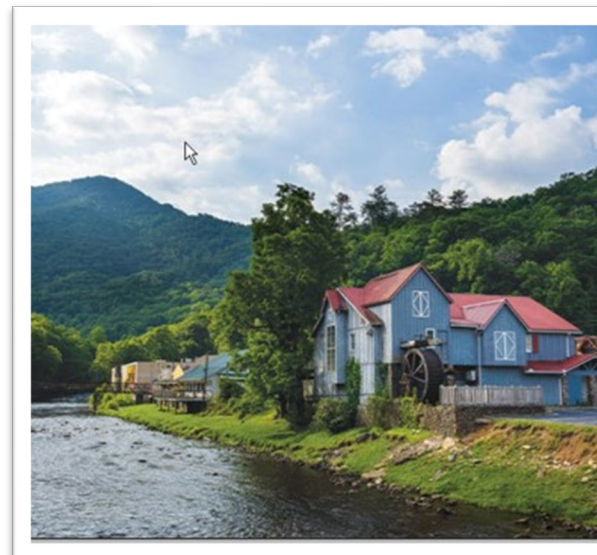
Annual opportunity for tribal, state, and general-purpose local governments to submit:



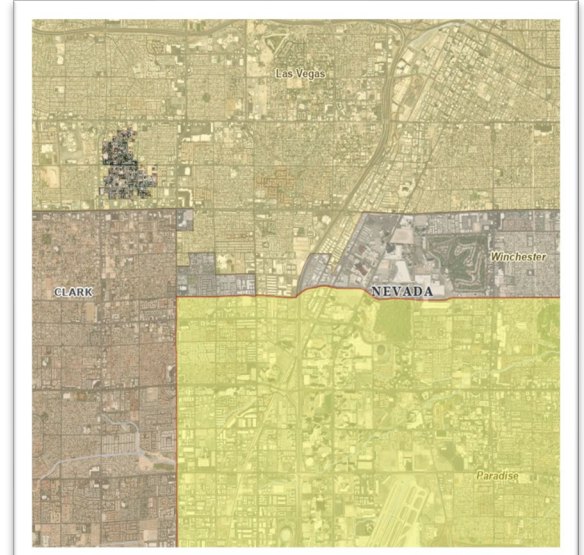
Boundary updates
(de/annexations, corrections)



**Name or description
update**



Status updates
(incorporations, dissolutions,
mergers, consolidations)



**Census Designated Places
updates**

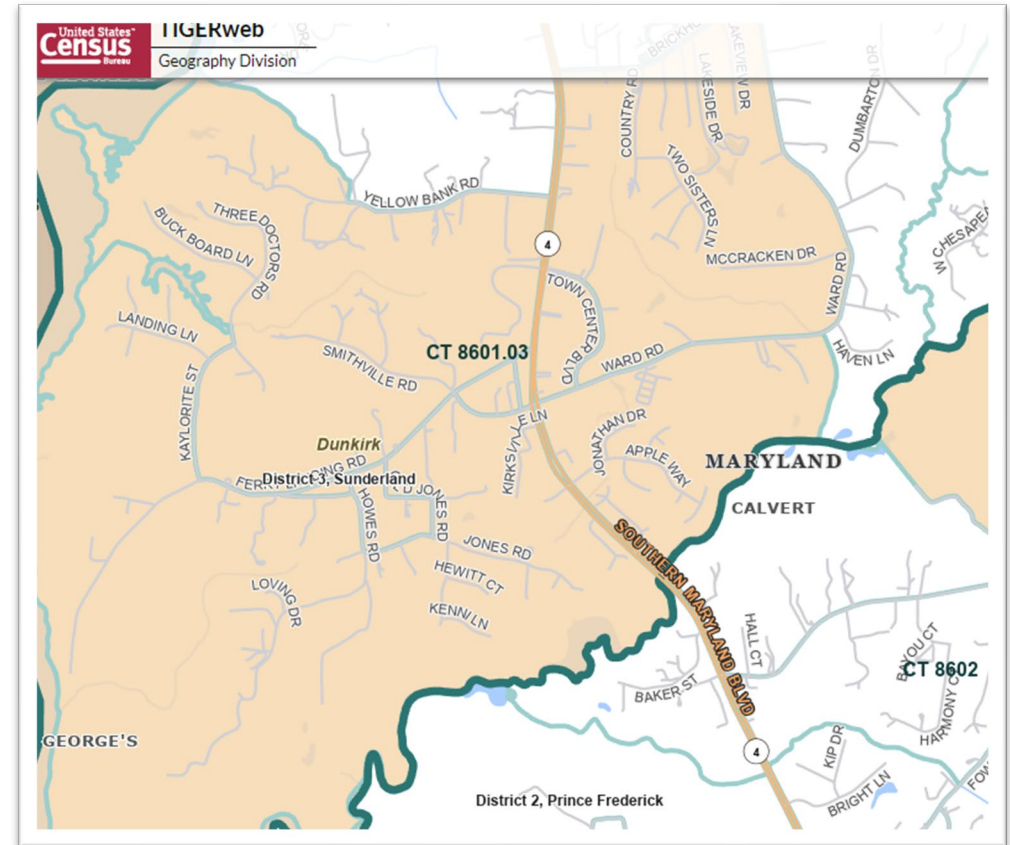
SCHOOL DISTRICT REVIEW PROGRAM (SDRP)

- U.S. Department of Education National Center for Education Statistics sponsored program conducted annually by the Census Bureau.
- Enables state officials to review school district boundaries, codes, names, levels, and grade ranges.
- Required for states' allocation of federal funding.
 - Title I of the Elementary and Secondary Education Act (ESEA) as amended by Every Student Succeeds Act of 2015 (Public Law 114-95).



PARTICIPANT STATISTICAL AREAS PROGRAM (PSAP)

- Invited participants can review and modify select statistical boundaries.
 - Tracts.
 - Block Groups.
 - Census County Divisions.
 - Census Designated Places.
- Statistical areas are used to tabulate and disseminate data for the Decennial Census, Economic Census, and the annual American Community Survey (ACS) estimates.
- The PSAP schedule spans from 2028 to 2030.



[Participant Statistical Areas Program \(PSAP\) \(census.gov\)](https://www.census.gov/psap)

LOCAL UPDATE OF CENSUS ADDRESSES (LUCA)



- Authorizes the Census Bureau to share its address list prior to a census with state and general-purpose local government officials who agree to conditions of confidentiality.
 - Census Address List Improvement Act of 1994 (Public Law 103-430).
- LUCA participants can provide suggestions to the Census Bureau to:
 - Add missing addresses.
 - Delete addresses that do not exist.
 - Update the geographic location of addresses.
- Participants receive feedback on their suggestions and have the option to appeal results to the Office of Management and Budget (OMB).

GEOGRAPHIC PARTNERSHIP PROGRAMS TIMELINE

2025

- BAS
- SDRP

2026

- RDP Phase 1 – BBSP
- BAS
- SDRP

2027

- RDP Phase 1 – BBSPV
- BAS
- SDRP
- LUCA

2028

- RDP Phase 2 – VTD
- BAS
- SDRP
- LUCA

2029

- RDP Phase 2 – VTDV
- BAS
- SDRP
- PSAP
- LUCA
- NC

2030

- RDP Phase 2 – VTDV2
- BAS
- BVP
- SDRP
- PSAPV
- NC



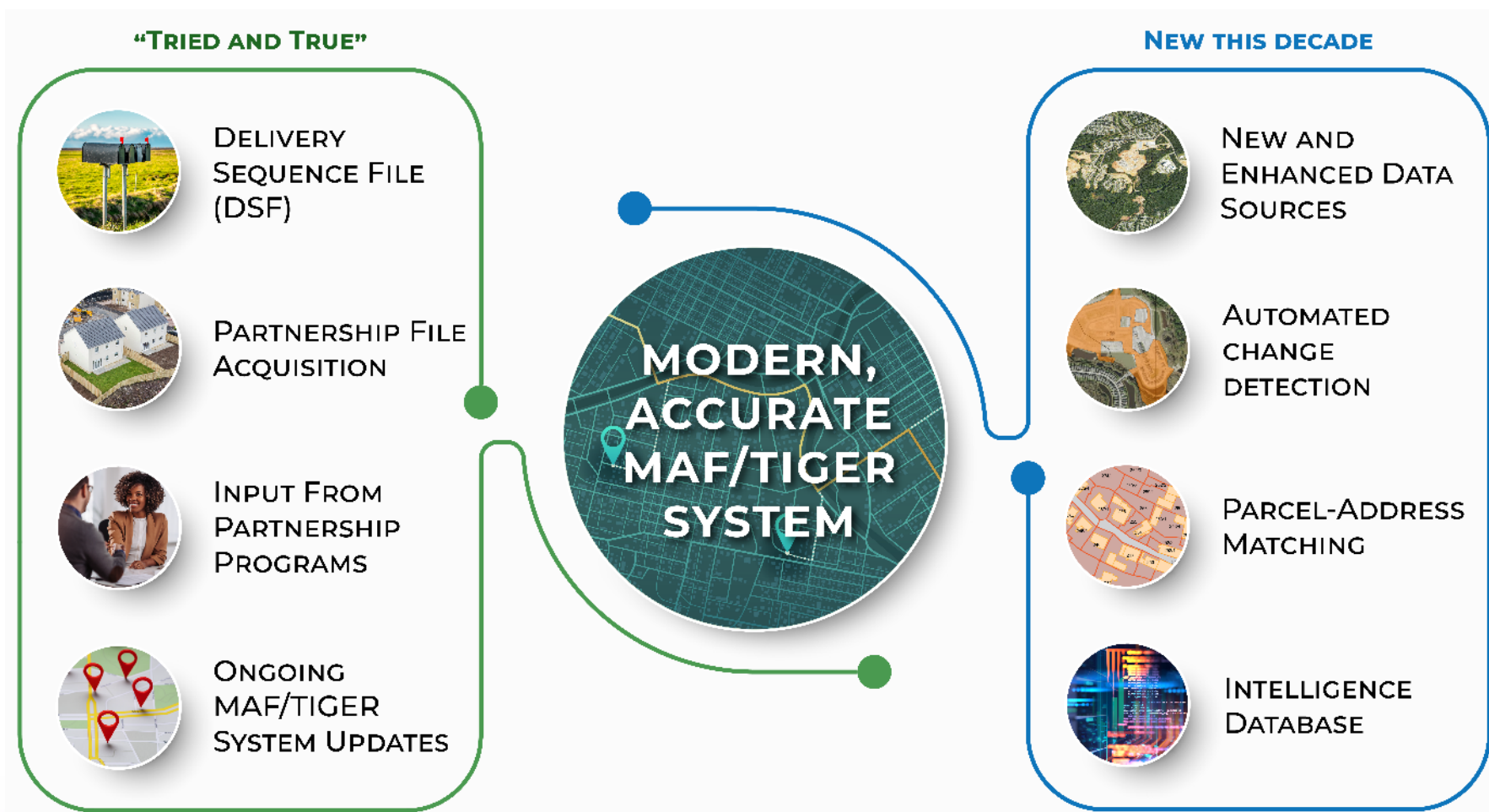
STREET AND ADDRESS IMPROVEMENT EFFORTS

STREET UPDATES

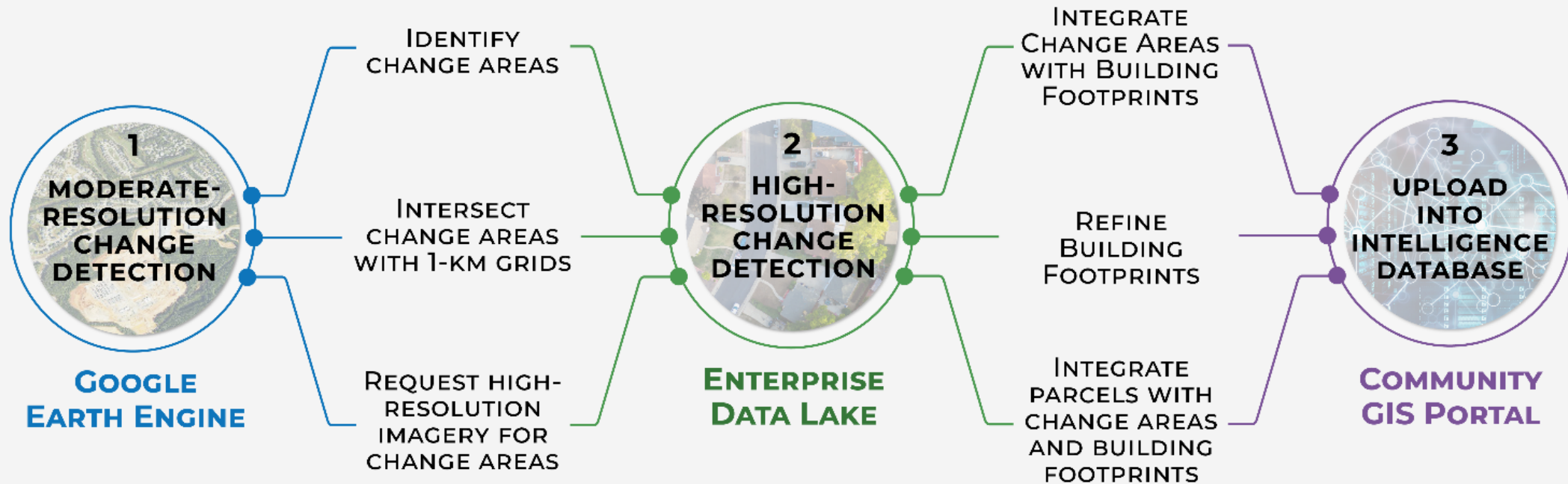


- Framework for census blocks and address geocoding.
- Working with tribal, federal, state, and general-purpose local government partners to update streets base.
 - United States Geological Survey (USGS).
 - Geographic Partnership Programs.
 - Authoritative sources.
- Change detection and object extraction.
- Internal consistency edits.
- Ad hoc user requests.
- Transactional updates preferred.
 - Minimal and optimal requirements.

UPDATING MAF/TIGER IN AN EVOLVING GEOSPATIAL ENVIRONMENT



NEW THIS DECADE: AUTOMATED CHANGE DETECTION



MODERATE LEVEL CHANGE DETECTION



Imagery: © 2023 ESA Sentinel-2, Image Dates 4/3/2020, 11/4/2023

HIGH RESOLUTION CHANGE DETECTION



Imagery: © 2023, Maxar, USG Plus, Image Date 3/12/2023

EXAMPLE – MANY CHANGES



Housing Unit Change Viewer: 2020 to 2024

PERCENT CHANGE

NUMERIC CHANGE

PERCENT AND NUMERIC CHANGE

ABOUT THIS MAP

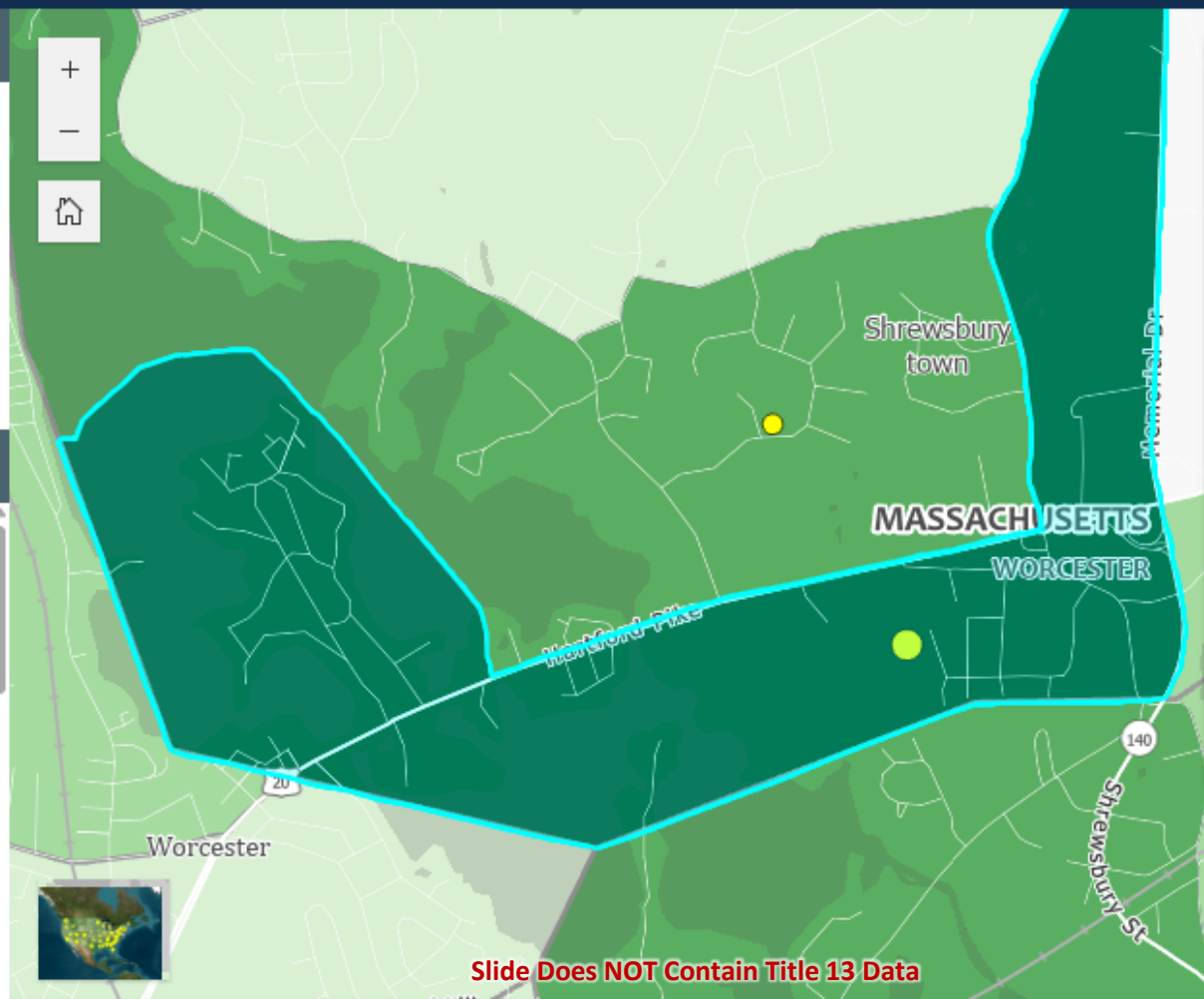
This map application includes three maps depicting the change in the number of housing units (including transitory units but not including group quarters) from the 2020 Census to November 2024: percent change, numeric change, and a combination of percent change and numeric change. Each map shows change at the state, county, census tract, census block group, and census block levels. Class breaks and the number

LEGEND

Change in Number of Housing Units from 2020 to 2024

Census Block Group

- 250 or more increase
- 100 to 249 increase
- 25 to 99 increase
- 1 to 24 increase
- No change
- 1 to 24 decrease



Block Group 1, Census Tract 7391.01, Worcester County, Massachusetts

Zoom to

| | |
|---|------|
| Change in number of housing units from 2020 to 2024 | 249 |
| Percent change in number of housing units from 2020 to 2024 | 43.8 |
| Total housing units in 2024 | 817 |
| Total housing units in 2023 ¹ | 571 |
| Total housing units in 2020 | 568 |
| Total group quarters in 2024 | 0 |

Slide Does NOT Contain Title 13 Data



Thank You!



Redistricting Data Program Overview

James Whitehorne
Chief, Redistricting and Voting Rights
Data Office

Agenda

1. Redistricting Data Program (RDP)
 1. Mission
 2. Program Phases
 3. RDP Program Activities Timeline
2. Redistricting Data Program Resources

Redistricting Data Program Mission

Program Mission: Provide states an opportunity to identify the geographic areas for which specific tabulations of population are needed for legislative redistricting and to deliver high quality data for those areas in a timely manner.

Primary Program Requirements:

- Conduct the program in a non-partisan manner.
- Establish program criteria.
- Identify required tabulations and geographic areas.
- Deliver basic tabulations of population in the state identified geographies to the governor and the officers or public bodies having initial responsibility for the legislative apportionment or districting of each state no later than 1 year from Census Day.

2030 Redistricting Data Program's Five Phases



**Building the
Frame**

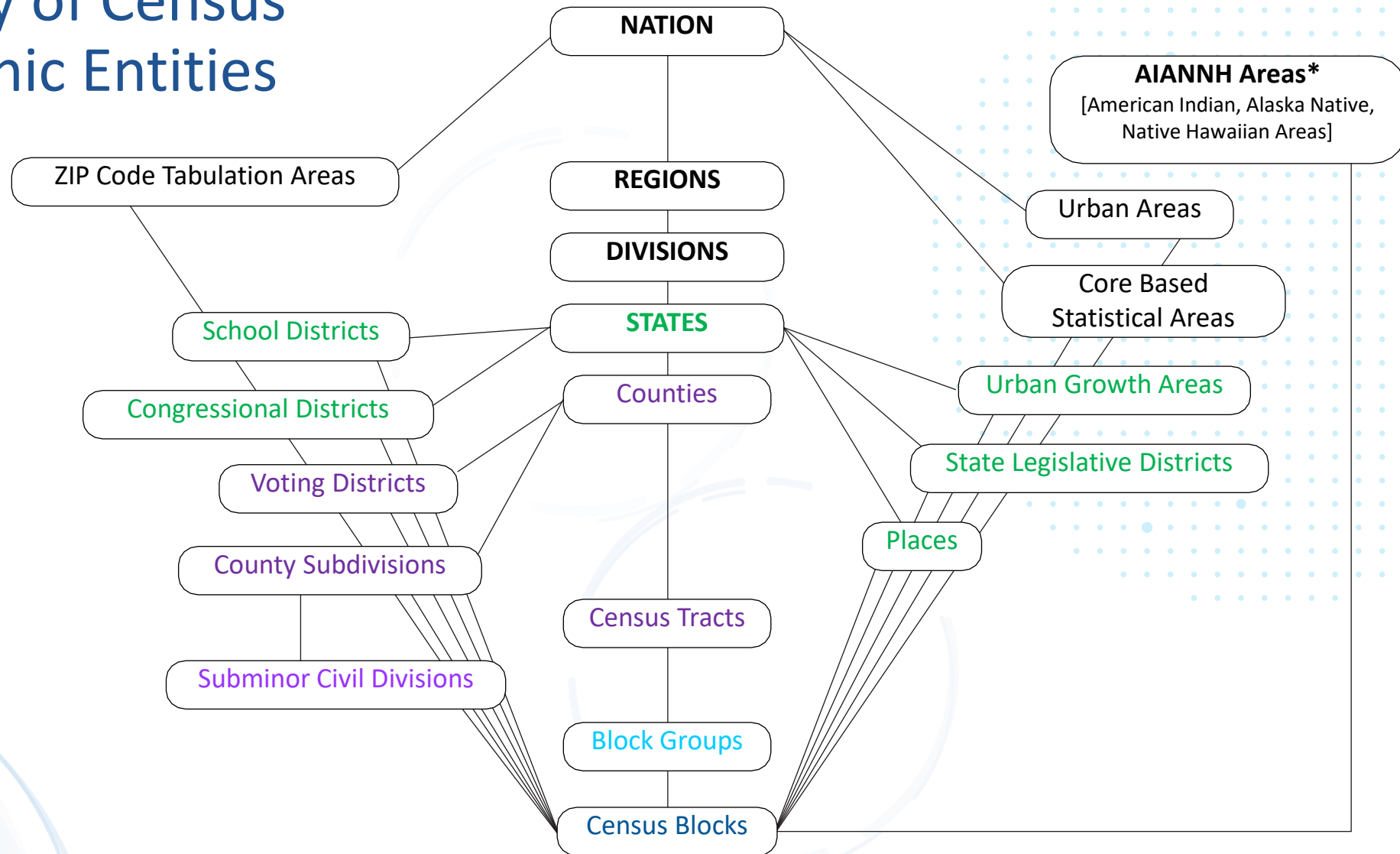
**Meeting the
Legal
Deliverable
Requirement**

**Providing
Additional
Value**

**Research and
Planning**

- Phase 1: Block Boundary Suggestion Project (BBSP)
- Phase 2: Voting District Project (VTDP)
- Phase 3: Data Delivery (Official Tabulations & Geographic Support Products)
- Phase 4: Collection of Congressional and State Legislative Redistricting Plans
- Phase 5: Evaluation of the Census Redistricting Data Program and Recommendations for the Next Census

Hierarchy of Census Geographic Entities



* Refer to the "Hierarchy of American Indian, Alaska Native, and Native Hawaiian Areas."

Phase 1: Block Boundary Suggestion Project

Initial Collection - January 2026 – May 2026

Verification - January 2027 – May 2027

Liaisons flag edges to be held or removed as 2030 Census block boundaries.

- Allows states to participate in shaping their small area geographies for use in redistricting.
- A prototype block file is provided to assist in block suggestion decision making.

Liaisons can make updates to other geographic features.

- Make legal boundary changes (i.e., counties, cities).
- Add, delete, or modify linear features (i.e., roads, railroads, pipelines).
- Add, delete, or modify area features (i.e., jail areas, state parks).



Phase 2: Voting District Project

Initial Collection - January 2028 – May 2028

1st Verification - January 2029 – May 2029

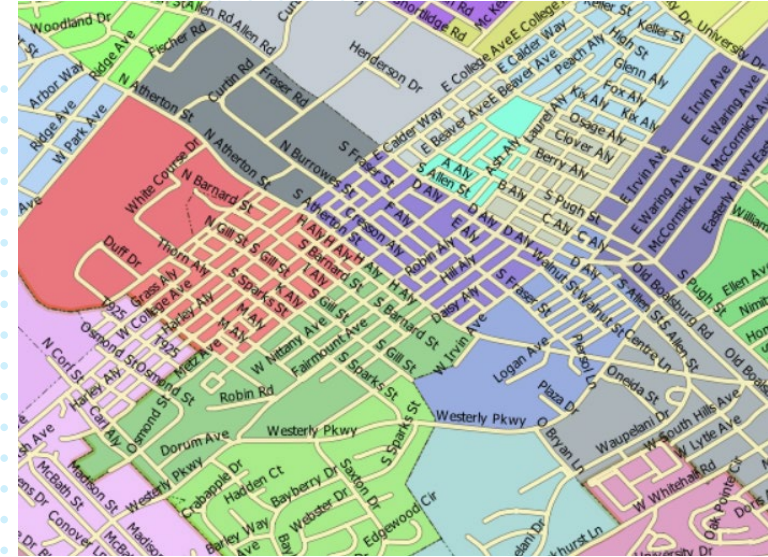
2nd Verification - January 2030 – March 2030*

Liaisons provide and edit their states' voting districts (e.g., precincts, wards).*

Users can also make updates to other geographic features.

- Make additional block boundary suggestions.
- Make legal boundary corrections and annexations (e.g., counties, cities, townships).*
- Add, delete, or modify linear features (e.g., roads, pipelines).
- Add, delete, or modify area features (e.g., jail areas, state parks).

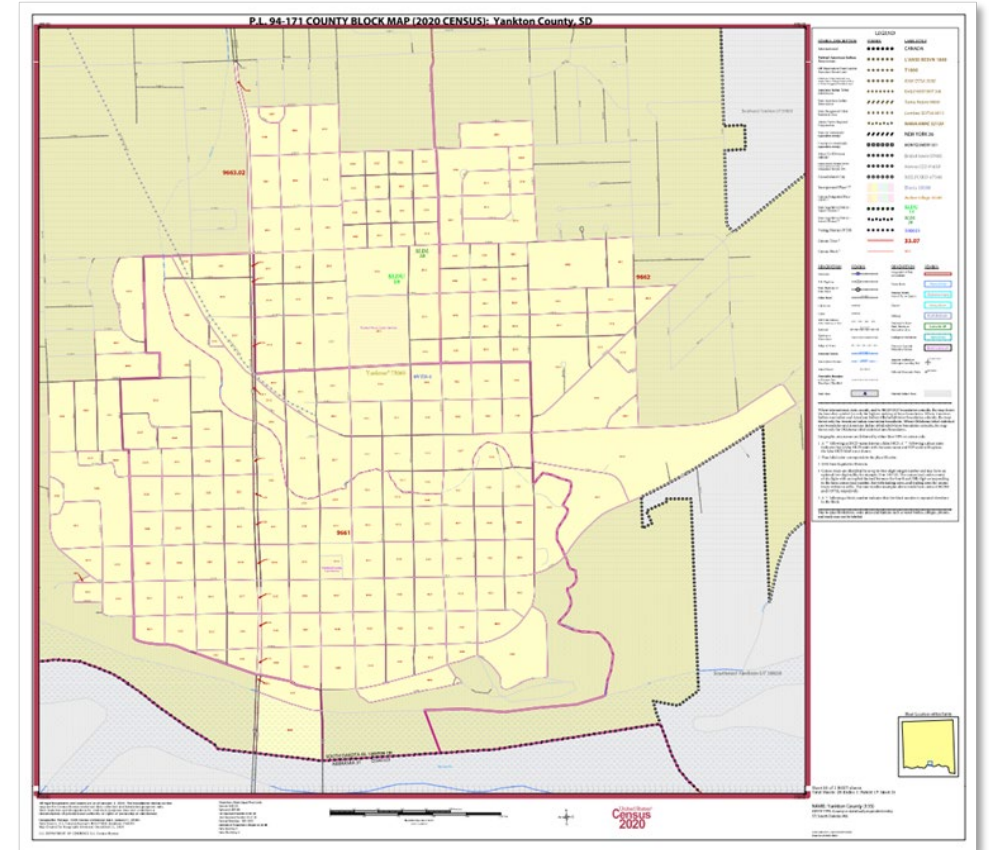
* Limited updates for 2nd verification due to required shorter timeframe



Phase 3: Data Delivery, Geographic Support Products

A series of geographic support products will be provided to assist states in their use of the provided redistricting data.

- Shapefiles – Digital boundary and feature files for use in computerized mapping and analysis.
- Maps (PDF only) – County Block, State Legislative and Voting District, Census Tract, School District.
- Block Assignment Files – Tables identifying the blocks used to build different geographic entities.
- Name Lookup Tables – Tables showing geographic entity names associated with their geographic codes.
- Block to Block Relationship Files – Crosswalk of 2020 Blocks to 2030 Blocks.



Phase 3: Data Delivery, Official Tabulations

“**Tabulations of population** for the areas identified in any plan approved by the Secretary shall be completed by him [her] as expeditiously as possible after the census date and reported to the Governor of the State involved and the officers or public bodies having responsibility for legislative apportionment or districting of such State, except that such tabulations of population of each State requesting a tabulation plan, and basic tabulations of population of each State, shall, in any event, be completed, reported and **transmitted to each respective State within one year after the census date.**”

| 2020 Census P.L. 94-171 Redistricting Data Tabulations |
|--|
| Table P1 – Race |
| Table P2 – Hispanic or Latino, and not Hispanic or Latino by Race |
| Table P3 – Race for the Population 18 Years and Over |
| Table P4 – Hispanic or Latino, and not Hispanic or Latino by Race for the Population 18 Years and Over |
| Table H1 – Occupancy Status (Housing) |
| Table P5 – Group Quarters Population by Major Group Quarters Type |

U.S. Office of Management and Budget Releases Updated Race and Ethnicity Statistical Standards

On March 28, 2024, the U.S. Office of Management and Budget (OMB) [published the results](#) of their Statistical Policy Directive No. 15 (SPD 15) review and issued [updated standards](#) for maintaining, collecting and presenting race and ethnicity data.



OFFICE OF MANAGEMENT AND BUDGET

Revisions to OMB's Statistical Policy Directive No. 15: Standards for Maintaining, Collecting, and Presenting Federal Data on Race and Ethnicity

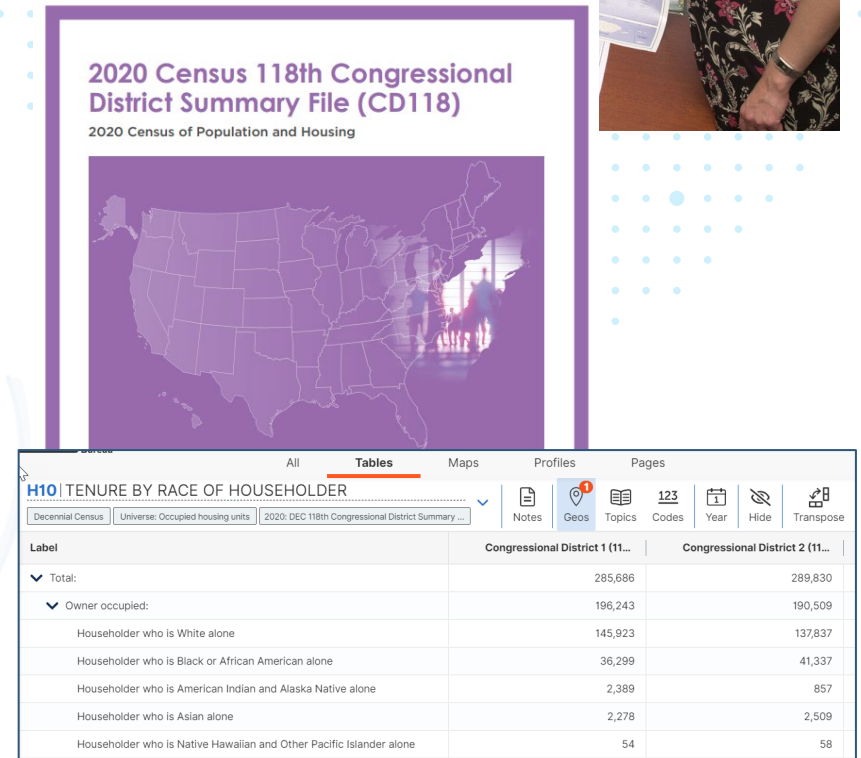
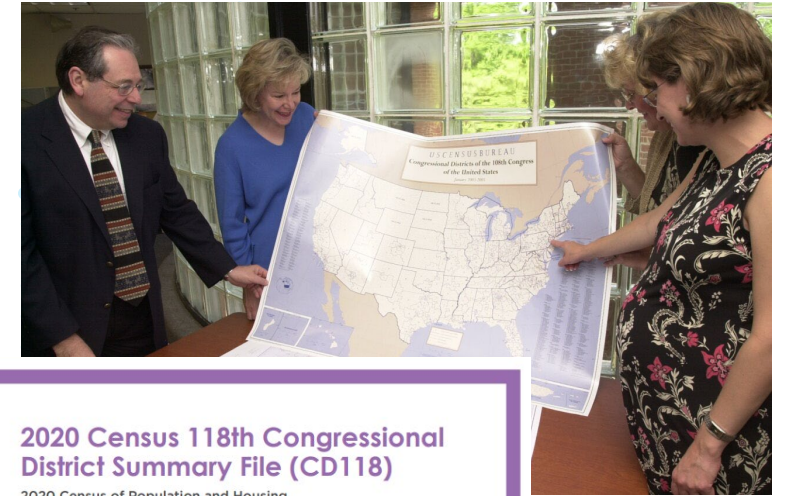
AGENCY: Office of Information and Regulatory Affairs, Office of Management and Budget, Executive Office of the President.

ACTION: Notice of decision.

SUMMARY: By this Notice, the Office of Management and Budget (OMB) is announcing revisions to Statistical Policy Directive No. 15: Standards for Maintaining, Collecting, and Presenting Federal Data on Race and Ethnicity (SPD 15). The revised SPD 15 is presented at the end of this Notice; it replaces and supersedes OMB's 1997 *Revisions to the Standards for the Classification of Federal Data on Race and Ethnicity*. OMB is taking this action to meet its responsibilities to develop and oversee the implementation of Government-wide principles, policies, standards, and guidelines concerning the development, presentation, and dissemination of statistical information. These revisions to SPD 15 are intended to result in more accurate and useful race and ethnicity data across the Federal government.

Phase 4: Collection of Congressional and State Legislative Redistricting Plans

- Before the 2030 Census, changes to congressional or state legislative districts are collected every two years.
- Following the 2030 Census, a national collection of the post-decennial congressional and state legislative districts occurs.
- The new plans are collected from the state appointed Redistricting Data Program liaisons.
- Geographic products are created from the new plans and made available to the states and the public.
- A Congressional District Summary File tabulation product (which includes state legislative districts) is created from the collected plans.
- Other surveys (e.g., the American Community Survey) incorporate newly redistricted plans into future data products.



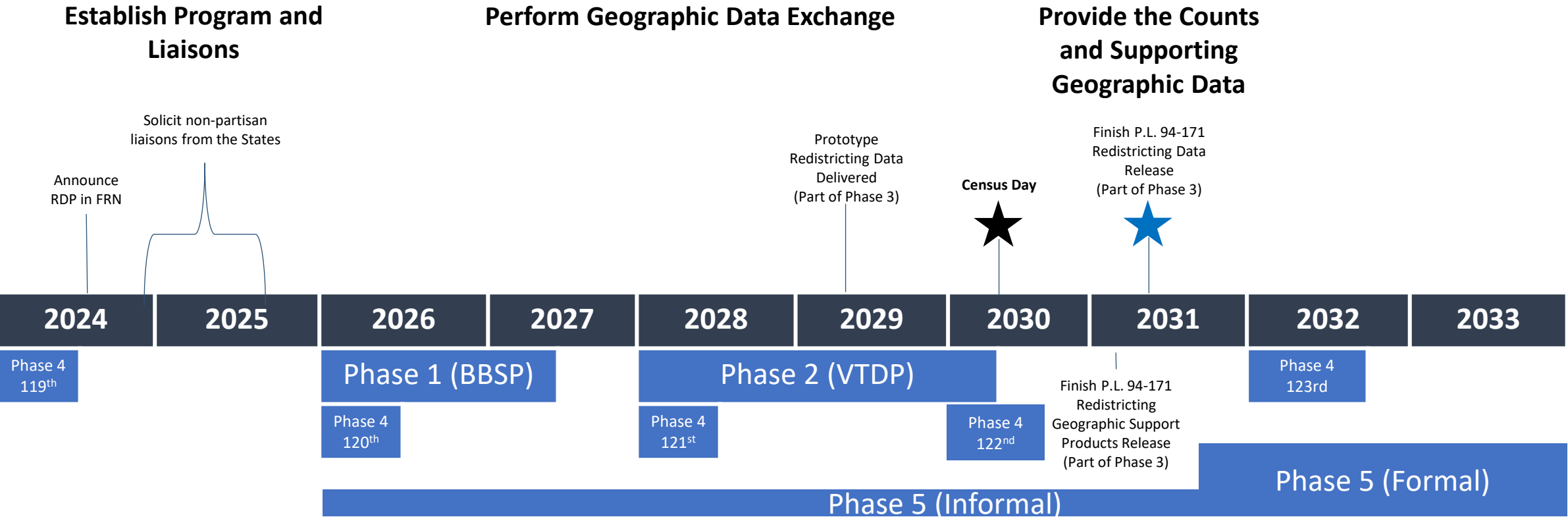
Phase 5: Evaluation of the Census Redistricting Data Program and Recommendations for the Next Census

- Each decade we consult with stakeholders and official program non-partisan liaisons to identify successes and shortcomings of the previous Census's Redistricting Data Program (RDP).
- We use that feedback to identify and catalog state supplied recommendations for the next Census's RDP.
- Phase 5 for the 2030 Census will culminate in a publication titled *Designing P.L. 94-171 Redistricting Data for the Year 2040 Census—The View From the States*.



2030 Census Redistricting Data Program

Program Activities Timeline



- Five Phases of the 2030 Redistricting Data Program (RDP)**
- Phase 1 – The Block Boundary Suggestion Project (BBSP)
 - Phase 2 – The Voting District Project (VTDP)
 - Phase 3 – Delivery of the P.L. 94-171 Redistricting Data and Geographic Support Products
 - Phase 4 – The Collection of Congressional and State Legislative Districts (CD/SLD)
 - Phase 5 – The Review of the 2030 RDP and the Look-ahead to the 2040 RDP (The View from the States)

Redistricting Data Program Resources

Redistricting Data Program Main Page

- <https://www.census.gov/rdo>

Voting Rights Data Main Page

- <https://www.census.gov/programs-surveys/decennial-census/about/voting-rights.html>

Redistricting Data Program Management

- <https://www.census.gov/programs-surveys/decennial-census/about/rdo/program-management.html>

Thank you!

Direct email: James.Whitehorne@census.gov

Office email: rdo@census.gov

Phone: 301-763-4039

U.S. CENSUS BUREAU MAF/TIGER SYSTEM

GEOSPATIAL
INFORMATION IN OUR
MAF/TIGER SYSTEM
INCLUDES...

OVER 14 MILLION UNIQUE GEOGRAPHIC AREAS, INCLUDING LEGAL, ADMINISTRATIVE, AND STATISTICAL AREAS.

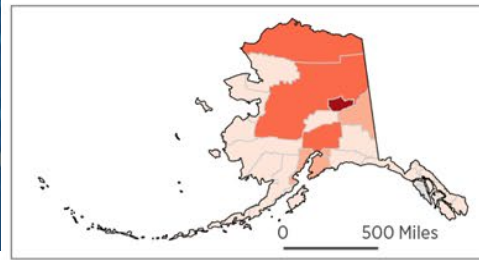
LEGAL BOUNDARIES FOR APPROXIMATELY 40,000 UNITS OF GOVERNMENT.

APPROXIMATELY 7 MILLION MILES OF ROADS.

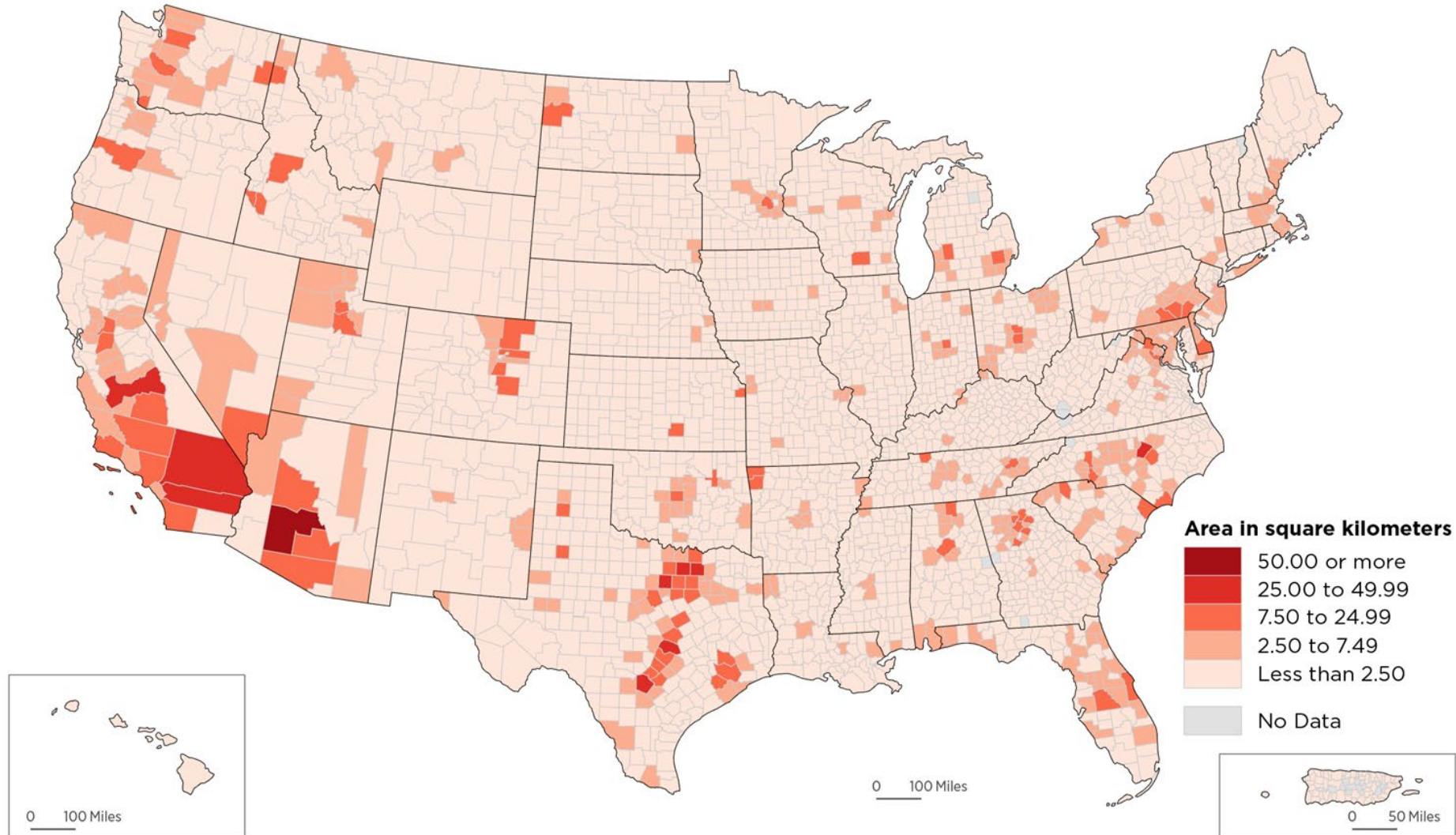
ADDRESSES FOR MORE THAN 148 MILLION HOUSING UNITS.

STRUCTURE POINTS FOR APPROXIMATELY 95.5% OF THOSE HOUSING UNITS.

RESULTS BY COUNTY



**Total Area of Automated Change Detected by County:
May 2022 to August 2024**



ADDRESS TOOLS AND RESOURCES AVAILABLE

- **Census Bureau's Address Tools:**

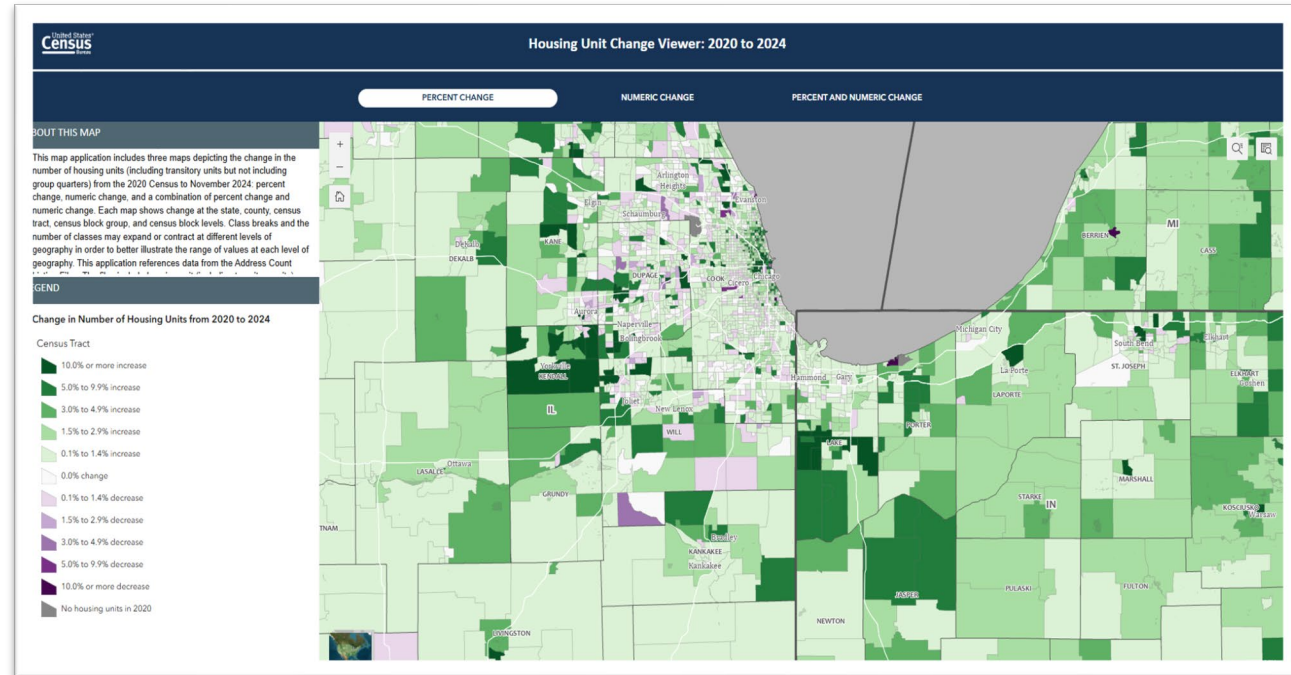
- [Current Address Count Listing Files](#) and [Viewer](#).
- [2020 Address Count Listing Files Viewer](#).
- [Census Geocoder](#).
- [Housing Unit Change Viewer](#).

- **Other Addressing Resources:**

- [National Address Database](#).

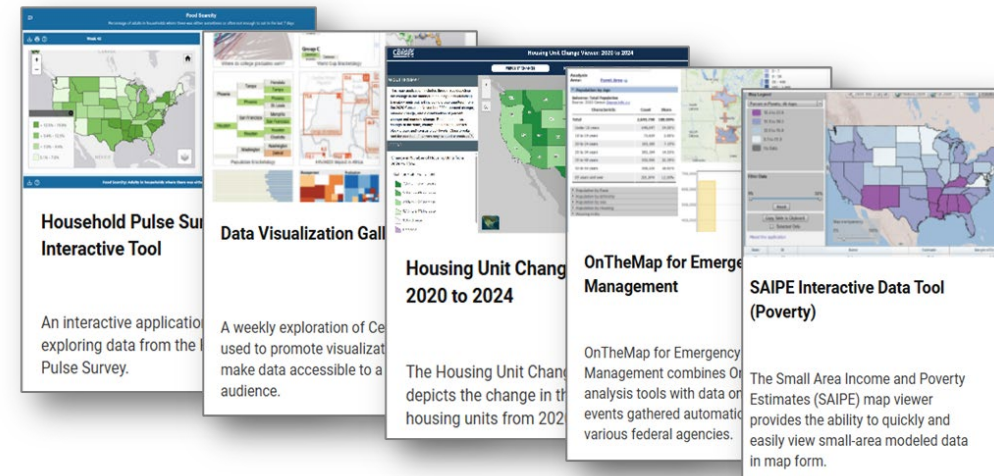
- **U.S. Addressing Standards:**

- [United States Thoroughfare, Landmark, and Postal Address Data Standard](#).
- [Postal Addressing Standards Publication 28](#).
- [National Emergency Number Association \(NENA\) Standards and Documents](#).



GEOSPATIAL PRODUCTS

- TIGER/Line.
 - Shapefiles.
 - GeoPackages.
 - Geodatabases.
- Cartographic Boundary Files.
 - Shapefiles.
 - Geodatabases.
 - KML format.
- TIGERweb.
- Interactive Maps.



CENSUS CONTACT INFORMATION

PRESENTER INFORMATION:

Andrea Grace Johnson

Deputy Division Chief, Geography Division

U.S. Census Bureau

PROGRAM CONTACT INFORMATION:

Geography (General): geo.geography@census.gov.

RDP: rdo@census.gov.

BAS: geo.bas@census.gov.

SDRP: geo.school@census.gov.

LUCA: 2030.LUCA@census.gov.

PSAP: geo.psap@census.gov.

MASSACHUSETTS CONTACT INFORMATION

Governor

Maura Healey
P: 617.725.4005

2030 Redistricting Data Program Liaison

William Francis Galvin, Secretary of the Commonwealth of Massachusetts
E: cis@sec.state.ma.us

State Data Center

Carrie Bernstein
P: 301.715.8592
E: cbernstein@donahue.umass.edu

BAS Contact (State Agreement)

Daniel Marrier, Senior GIS Analyst and Database Architect
P: 617.626.4537
E: daniel.marrier@state.ma.us

SDRP Mapping Coordinator

Jeremy Simon, Massachusetts Department of Elementary and Secondary Education
P: 781.338.6835
E: Jeremy.Simon@mass.gov

SDRP Title 1 Coordinator

Simone Lynch
E: simone.e.lynch@mass.gov

LUCA Liaison (2020)

John Barr, Census Program Manager
P: 617.878.3219
E: john.barr@sec.state.ma.us