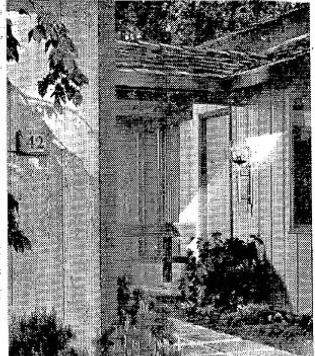


G4 THE SUNDAY SUN, LOWELL, MASS., SEPT. 14, 1975

# Insulation — what it is, what it does

WASHINGTON — Despite all the recent talk about insulation, few consumers know exactly what insulation really is, what it does, or how to where to buy it. The following information is the basic function of insulation.



Installs fast  
Rough sawn Philippine Mahogany siding installs quickly because of the large areas covered by each 4-ft., 4-ft. or 4-ft. panel.

Insulation is to retain the heat of a room. The greater the difference between inside and outside temperatures, the faster heat will flow through the walls of your home. For example, the inside temperature is 70 degrees and the outside temperature is zero degrees, the heat loss of a well-insulated wall is approximately 10 degrees. Unfortunately, the living area within 2 feet of that wall feels chilly and uncomfortable. In fact, if there is a temperature difference of only 10 degrees between the wall and outside, you will feel a chill.

Insulation effectively slows heat flow, allowing that air to stay warm within a home. It is usable, dust-free, and does not deteriorate. It remains under any conditions.

Q. What kind of insulation is most frequently used in residential construction?  
A. While there are several kinds of insulation available to homeowners, fiber glass — because of its consistent quality, ease of application and durability — is the most widely used.

Q. How is insulation performance measured?  
A. The insulation industry measures the performance of its products in terms of "R." The higher the "R," the greater the resistance value, the more the insulation will resist heat flow. For example, fiber glass insulation has an R-value of 3.7 per inch. A 6-inch thickness of fiber glass insulation (R 13.8) is better than a 2-inch thickness of mineral wool insulation (R 7.4).

Q. What should be installed?  
A. Room addition: If you're expanding your home with a finished attic or an extra room, plan to install a minimum of 6 inches (R 19) of fiber glass building insulation in ceiling and a minimum 3 1/2 inches (R 11) in walls. In many cases you'll be able to heat or cool the additional space adequately and economically with your present equipment.

Q. Where should insulation be installed?  
A. Walls, floors and ceilings that adjoin unheated areas should be insulated to provide a barrier of resistance to heat loss. Ceiling and attic: For best results, insulation should be installed in the attic floor for ceiling if you have a finished attic room, or in a few inches of the ceiling of a finished attic room. If you already have a home-wrap membrane, or if you're planning to buy new, make sure insulation is installed in ceiling and attic.

Q. How much does insulation cost?  
A. To insulate an average 1,000 square foot attic with 6 inches (R 19) of fiber glass insulation will cost approximately \$100. You may "find out" by insulating a few square feet on insulation will actually be returned to the homeowner in fuel savings. In fact, for most homeowners, investment in insulation may pay for itself in lower heating and cooling bills within the first or second year. And because insulation is a permanent improvement, the savings will continue year after year — long after the insulation has been paid for.

Q. How much does insulation actually save the average homeowner?  
A. Depending on geography and local utility rates, just adding 6 inches (R 19) of fiber glass insulation in the attic can save a homeowner as much as several hundred dollars a year — on heating and air conditioning bills.

Q. How much does insulation actually save the average homeowner?  
A. Depending on geography and local utility rates, just adding 6 inches (R 19) of fiber glass insulation in the attic can save a homeowner as much as several hundred dollars a year — on heating and air conditioning bills.

Q. How much does insulation actually save the average homeowner?  
A. Depending on geography and local utility rates, just adding 6 inches (R 19) of fiber glass insulation in the attic can save a homeowner as much as several hundred dollars a year — on heating and air conditioning bills.

Q. How much does insulation actually save the average homeowner?  
A. Depending on geography and local utility rates, just adding 6 inches (R 19) of fiber glass insulation in the attic can save a homeowner as much as several hundred dollars a year — on heating and air conditioning bills.

Q. How much does insulation actually save the average homeowner?  
A. Depending on geography and local utility rates, just adding 6 inches (R 19) of fiber glass insulation in the attic can save a homeowner as much as several hundred dollars a year — on heating and air conditioning bills.

Q. How much does insulation actually save the average homeowner?  
A. Depending on geography and local utility rates, just adding 6 inches (R 19) of fiber glass insulation in the attic can save a homeowner as much as several hundred dollars a year — on heating and air conditioning bills.

Q. How much does insulation actually save the average homeowner?  
A. Depending on geography and local utility rates, just adding 6 inches (R 19) of fiber glass insulation in the attic can save a homeowner as much as several hundred dollars a year — on heating and air conditioning bills.

# 10 points to ponder

LOWELL — Energy experts have prepared a 10-point checklist for saving energy on cooling your home.

1. We want to help consumers save money, "not an expert." We're trying to help you save money on cooling your home.

2. We want to help you conserve energy. We can help you conserve energy by following these recommendations:

3. Leave these windows and doors open, especially if your home is centrally air conditioned. Make sure that weather stripping and caulking are in good shape.

4. Close draperies on the sunny side of the house. When selecting new draperies, include shaded fabrics.

5. How at least 1/2 inch of fiber glass insulation in the attic. Insulation keeps heat in during the winter, and out in the summer. Your home stays cooler naturally, so the air conditioner (if you have one) doesn't have to operate as long to keep you comfortable.

6. Make sure the air conditioner has clean filters, so it will operate at peak efficiency. When purchasing new air conditioning equipment, buy units with the highest efficiency rating. They'll use less electricity in the long run.

7. Use ceiling fans in the living room.

8. Set the thermostat at 78 degrees. The central air conditioning system will run less often, and the house will stay cooler.

9. There is a great fireplace for every budget and every area of the home or apartment. The "built-in" central air conditioning system is a great fireplace for every budget and every area of the home or apartment.

10. The "built-in" central air conditioning system is a great fireplace for every budget and every area of the home or apartment.

Q. How much does insulation actually save the average homeowner?  
A. Depending on geography and local utility rates, just adding 6 inches (R 19) of fiber glass insulation in the attic can save a homeowner as much as several hundred dollars a year — on heating and air conditioning bills.

Q. How much does insulation actually save the average homeowner?  
A. Depending on geography and local utility rates, just adding 6 inches (R 19) of fiber glass insulation in the attic can save a homeowner as much as several hundred dollars a year — on heating and air conditioning bills.

Q. How much does insulation actually save the average homeowner?  
A. Depending on geography and local utility rates, just adding 6 inches (R 19) of fiber glass insulation in the attic can save a homeowner as much as several hundred dollars a year — on heating and air conditioning bills.

Q. How much does insulation actually save the average homeowner?  
A. Depending on geography and local utility rates, just adding 6 inches (R 19) of fiber glass insulation in the attic can save a homeowner as much as several hundred dollars a year — on heating and air conditioning bills.

Q. How much does insulation actually save the average homeowner?  
A. Depending on geography and local utility rates, just adding 6 inches (R 19) of fiber glass insulation in the attic can save a homeowner as much as several hundred dollars a year — on heating and air conditioning bills.

Q. How much does insulation actually save the average homeowner?  
A. Depending on geography and local utility rates, just adding 6 inches (R 19) of fiber glass insulation in the attic can save a homeowner as much as several hundred dollars a year — on heating and air conditioning bills.

Q. How much does insulation actually save the average homeowner?  
A. Depending on geography and local utility rates, just adding 6 inches (R 19) of fiber glass insulation in the attic can save a homeowner as much as several hundred dollars a year — on heating and air conditioning bills.

Q. How much does insulation actually save the average homeowner?  
A. Depending on geography and local utility rates, just adding 6 inches (R 19) of fiber glass insulation in the attic can save a homeowner as much as several hundred dollars a year — on heating and air conditioning bills.

Q. How much does insulation actually save the average homeowner?  
A. Depending on geography and local utility rates, just adding 6 inches (R 19) of fiber glass insulation in the attic can save a homeowner as much as several hundred dollars a year — on heating and air conditioning bills.

Q. How much does insulation actually save the average homeowner?  
A. Depending on geography and local utility rates, just adding 6 inches (R 19) of fiber glass insulation in the attic can save a homeowner as much as several hundred dollars a year — on heating and air conditioning bills.

Q. How much does insulation actually save the average homeowner?  
A. Depending on geography and local utility rates, just adding 6 inches (R 19) of fiber glass insulation in the attic can save a homeowner as much as several hundred dollars a year — on heating and air conditioning bills.

Q. How much does insulation actually save the average homeowner?  
A. Depending on geography and local utility rates, just adding 6 inches (R 19) of fiber glass insulation in the attic can save a homeowner as much as several hundred dollars a year — on heating and air conditioning bills.

Q. How much does insulation actually save the average homeowner?  
A. Depending on geography and local utility rates, just adding 6 inches (R 19) of fiber glass insulation in the attic can save a homeowner as much as several hundred dollars a year — on heating and air conditioning bills.

Q. How much does insulation actually save the average homeowner?  
A. Depending on geography and local utility rates, just adding 6 inches (R 19) of fiber glass insulation in the attic can save a homeowner as much as several hundred dollars a year — on heating and air conditioning bills.

Q. How much does insulation actually save the average homeowner?  
A. Depending on geography and local utility rates, just adding 6 inches (R 19) of fiber glass insulation in the attic can save a homeowner as much as several hundred dollars a year — on heating and air conditioning bills.

# Factory-built fireplace can add very special touch

LOWELL — With factory light economy and guaranteed quality, a factory-built fireplace provides several benefits and is available in a wide variety of styles and finishes.

1. The factory-built fireplace is a complete unit, including the chimney, and is ready to install in a matter of hours.

2. The factory-built fireplace is a complete unit, including the chimney, and is ready to install in a matter of hours.

3. The factory-built fireplace is a complete unit, including the chimney, and is ready to install in a matter of hours.

4. The factory-built fireplace is a complete unit, including the chimney, and is ready to install in a matter of hours.

5. The factory-built fireplace is a complete unit, including the chimney, and is ready to install in a matter of hours.

6. The factory-built fireplace is a complete unit, including the chimney, and is ready to install in a matter of hours.

7. The factory-built fireplace is a complete unit, including the chimney, and is ready to install in a matter of hours.

8. The factory-built fireplace is a complete unit, including the chimney, and is ready to install in a matter of hours.

9. The factory-built fireplace is a complete unit, including the chimney, and is ready to install in a matter of hours.

10. The factory-built fireplace is a complete unit, including the chimney, and is ready to install in a matter of hours.

Q. How much does a factory-built fireplace cost?  
A. The cost of a factory-built fireplace varies from about \$1,000 to \$2,000, depending on the size and features.

Q. How long does it take to install a factory-built fireplace?  
A. Installation of a factory-built fireplace typically takes about 2-3 days, including chimney work.

Q. Are factory-built fireplaces safe?  
A. Factory-built fireplaces are designed to meet all safety standards and are safe when installed and used properly.

Q. How do I choose a factory-built fireplace?  
A. Consider the size, style, and features of the fireplace, as well as the cost and installation requirements.

Q. How do I maintain a factory-built fireplace?  
A. Regular cleaning and maintenance of the fireplace and chimney are essential for safe and efficient operation.

Q. How do I know if I need a factory-built fireplace?  
A. A factory-built fireplace is a good choice for anyone looking for a safe, easy-to-install fireplace.

Q. How do I know if I need a factory-built fireplace?  
A. A factory-built fireplace is a good choice for anyone looking for a safe, easy-to-install fireplace.

Q. How do I know if I need a factory-built fireplace?  
A. A factory-built fireplace is a good choice for anyone looking for a safe, easy-to-install fireplace.

Q. How do I know if I need a factory-built fireplace?  
A. A factory-built fireplace is a good choice for anyone looking for a safe, easy-to-install fireplace.

Q. How do I know if I need a factory-built fireplace?  
A. A factory-built fireplace is a good choice for anyone looking for a safe, easy-to-install fireplace.

Q. How do I know if I need a factory-built fireplace?  
A. A factory-built fireplace is a good choice for anyone looking for a safe, easy-to-install fireplace.

Q. How do I know if I need a factory-built fireplace?  
A. A factory-built fireplace is a good choice for anyone looking for a safe, easy-to-install fireplace.

Q. How do I know if I need a factory-built fireplace?  
A. A factory-built fireplace is a good choice for anyone looking for a safe, easy-to-install fireplace.

Q. How do I know if I need a factory-built fireplace?  
A. A factory-built fireplace is a good choice for anyone looking for a safe, easy-to-install fireplace.

Q. How do I know if I need a factory-built fireplace?  
A. A factory-built fireplace is a good choice for anyone looking for a safe, easy-to-install fireplace.



Older homes can look the new again by applying factory-built exterior siding.

**YOU CAN'T AFFORD A "BARGAIN" HOUSE PAINT.**

USE CALIFORNIA HOUSE PAINT

Reg. \$11.45 NOW \$8.95 4 gal. or more.

HARMON PAINT & WALLPAPER  
338 MARKET ST.  
LOWELL (Corner of Waverley St.) TEL. 452-8871

**INSTALL A POOL NOW!**

Enjoy a full season next year.

Gunite and Vinyl POOLS

Free Heater with full package for larger equipment at your investment.

No Down Payment 4 months before payments up to 18 year on credit approval.

Visit Us Today!

**POOLS**

Three inground pools on display also therapy pool.

Artistic Pools  
MEMBER N.H. STATE SWIMMING POOL INSTITUTE

2000 N. Main Street, Lowell, Mass. 01850  
TELEPHONE 452-8482  
Open 10:00 AM - 6:00 PM  
Friday, Open 'til 8:00 PM

**BRICK FIREPLACES**

CUSTOM-BUILT FOR ANY HOME NEW OR OLD ALL TYPES AND DESIGNS

Also Beginning of Older Fireplaces

Save ON FIRE COSTS

EXPERT CRAFTSMANSHIP

- Brick Fireplaces
- Brick Barbecues
- Brick Stoves
- Cast Iron Stoves
- Cast Iron Fireplaces
- Cast Iron Grills
- Cast Iron Sinks
- Cast Iron Bathtubs
- Cast Iron Sinks
- Cast Iron Stoves
- Cast Iron Fireplaces
- Cast Iron Grills
- Cast Iron Sinks
- Cast Iron Bathtubs

**G.P.M. CONTRACTORS**  
CALL NOW! 433-8717

**FIREPLACES**

and all types of masonry work

FREE estimates

SAVE money by dealing directly with the master mason (18 years experience)

call 851-9586 after 5:30 p.m.

**IDEAL PAVING CO.**

— FREE ESTIMATES —

HOT TOP DRIVEWAYS SIDEWALKS PARKING AREAS

FALL SPECIAL 25% DISCOUNT

TELEPHONE 433-4838 or 438-1872

**Wayne E. Anderson Company, Inc.**

OFFICES AND SHOWROOM

850 MAIN ST., TEWKSBURY, MASS. 01876

A Complete Line of Floor Covering, Carpet, Ceramic Tile and Counter Tops.

Sales and Installation

For Estimates Without Obligation Call 851-2909 or 851-4336

Store Hours Daily — Monday thru Saturday 9 to 5 Thursday Evenings 6 to 9