

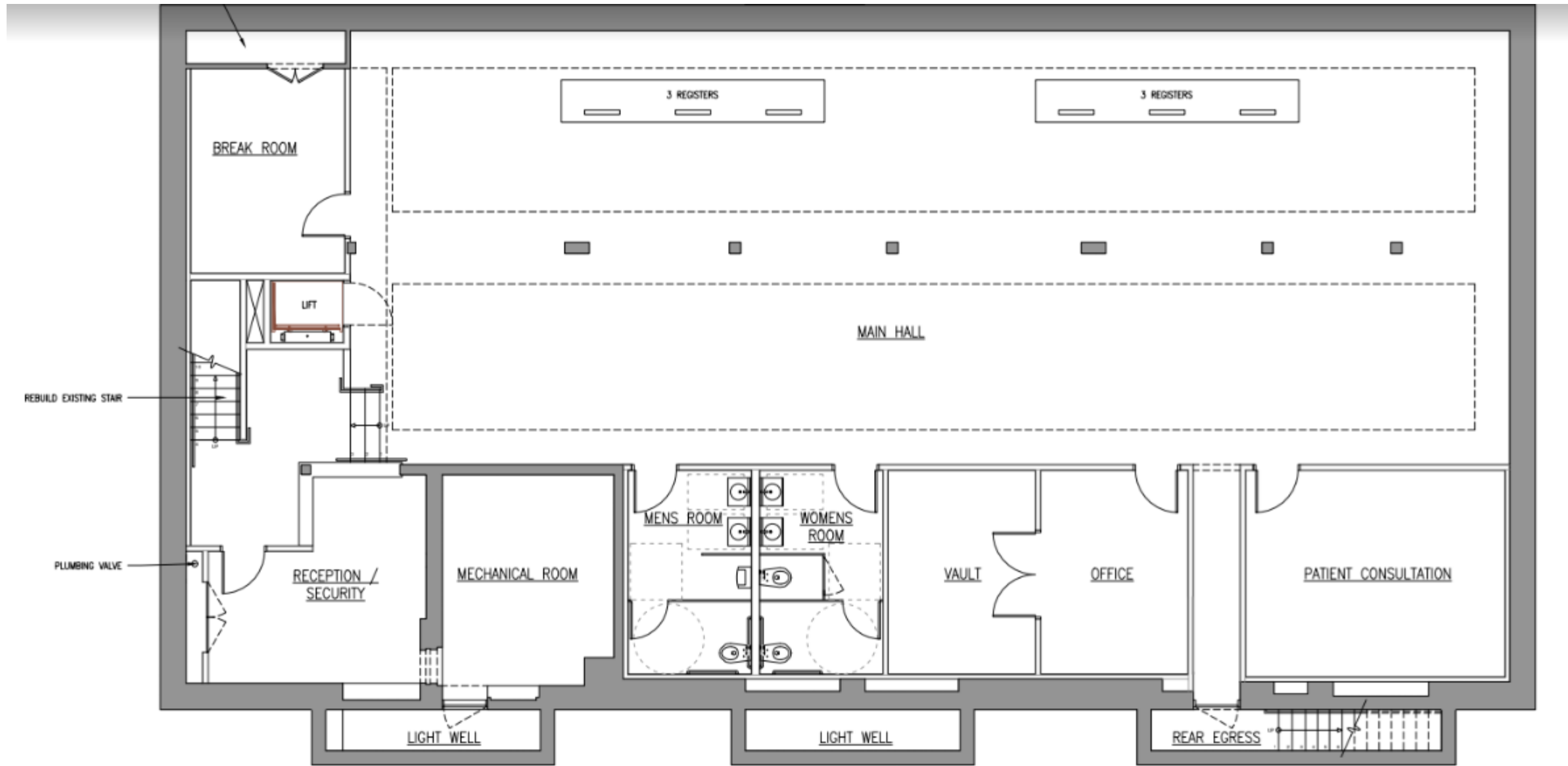


Brighton Organics d/b/a
Natural Selections

Our Mission

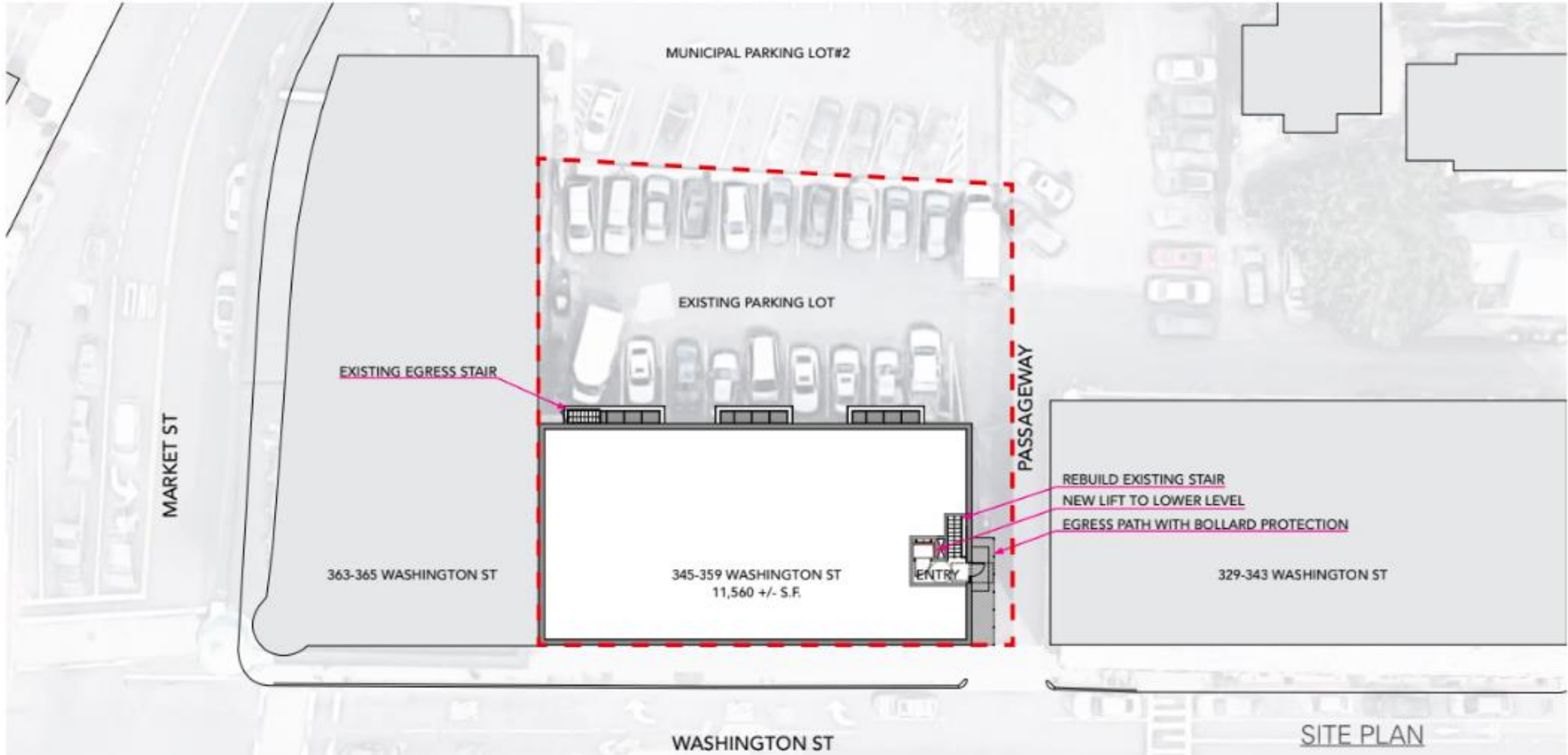
- Brighton Organics LLC. d/b/a Natural Selections is a Massachusetts-based company committed to serving adult-use customers and registered medical marijuana patients within Brighton. Natural Selections has set forth the following objectives in establishing its organization:
 - A compliant operation in good standing with all state and local regulations;
 - Safe, consistent, and effective cannabis and cannabis products of the highest quality;
 - Commitment to serving and educating consumers, patients and caregivers; and
 - Commitment to scientific research and development.
 - Thwarting the Black/Grey Market

345 Washington Street



BASEMENT FLOOR PLAN

345 Washington Street- Site Plan



345 Washington Street



History of Success



Our team has worked in the medical cannabis industry since 2009. In 2015, we spearheaded the design and development of Natural Selections' dispensary facility (2,700 square feet) and cultivation facility (8,000 square feet) in Colorado.

State of the Art Security: Dan Linskey

- Natural Selections intends to design its RMD based on the security principles of Crime Prevention Through Environmental Design (“CPTED”), Concentric Circles of Protection, and Integrated Design.
 - Natural Access Control: Use of doors, fences, landscaping, and other man-made and natural obstacles to limit access into the building or other defined interior space
 - Natural Surveillance: Increasing visibility by occupants and observers (security and staff) to increase the detection of unauthorized individuals or misconduct within a facility.
 - Natural Boundary Definition: Establishing a sense of ownership by occupants to increase vigilance in identifying intruders. This sends the message that would-be-offenders will be identified.

Integrated Design Security: Dan Linskey

- **Architectural Security** measures address items such as perimeter barriers, lighting, critical building services, spatial adjacencies, and control barriers.
- **Operational Security** measures address items such as staff and public access control, staffing, monitoring and administration of systems.
- **Electronic Security** measures address items such as access control and alarm monitoring, video surveillance, and security communications.

Preventing Diversion


- **Natural Selections understands the high risk associated with cultivating and dispensing cannabis. We are committed to preventing any incidents of diversion by implementing the following measures:**
 - Building a strong employee culture with a shared commitment to anti-diversion policies.
 - Enforcing strict chain of custody and inventory control procedures.
 - Implementing and patrolling state-of-the-art surveillance system.

Chain of Custody

- **We plan to use FlowHub inventory control system that tracks plants from seed to final product via a chain-of-command barcode system.**
 - Highly compliant with the regulations defined by the CCC
 - Incorporates technology to provide tracking mechanisms for each plant in a harvest, raw materials, finished products and byproducts as well as policies and protocols for chain of custody
 - This inventory system will chronicle every step, ingredient, activity, transaction, and dispensary agent, registered qualifying patient, or personal caregiver who handles, obtains, or possesses the product.


Benefits to City of Boston

Community Host Agreement



We are willing to offer up to the full 6% of the gross revenue generated annually from the RMD to be used at the City's discretion in the form of a Community Host Agreement. Based on projections, **this could provide the city with a total additional income of \$3MM during the first five years of operations.**

Subsidized Distribution Network



Our values are aligned with the initial principles outlined under Chapter 369, An Act for the Humanitarian Medical Use of Marijuana. We are committed to providing discounts to low-income individuals in accordance with 105 CMR 725 and relevant MA statutes.

Benefits to City of Boston

- **Charitable Contributions:** Natural Selections has demonstrated a commitment to philanthropy and plans to partner with local organizations and non-profits that promote public health within Brighton. Team members will also organize community outreach efforts, such as trash pick-up events, to create a safer, cleaner city as well as provide transparency about their operations and education about the responsible use of medical cannabis.
- **Educational Seminars:**
 - HIV/AIDS Prevention
 - Substance Abuse

Reported Studies

Teen marijuana use falls to 20-year low despite legalization

Updated on September 8, 2017 at 4:01 AM, Posted on September 8, 2017 at 4:00 AM




The New York Times

- 3.  [Trump Confirms Support for Law to Protect 'Dreamers'](#)
- 4.  [Cassini's Mission to Saturn in 100 Images](#)
- 5. 



Overdoses Fell with Medical Marijuana Legalization

 *Colleen Barry is a professor at the Johns Hopkins Bloomberg School of Public Health and co-director of the Johns Hopkins Center for Mental Health and Addiction Policy Research.*

UPDATED APRIL 26, 2016, 3:22 AM

While opioid pain relievers offer critical benefits to certain patients, such as those



SECTIONS ▾

NIGHTLY NEWS MSNBC MEET THE PRESS DATELINE TODAY



advertisement

This is real.

THIS IS US



SEASON PREMIERE
SEPT 26
TUE 9/8c 

HEALTH > HEALTH NEWS

HEALTH CARE DIET & FITNESS MENTAL HEALTH MEN'S HEALTH WOMEN'S HEALTH

HEALTH
MAR 27 2017, 9:47 PM ET

Legalized Marijuana Could Help Curb the Opioid Epidemic, Study Finds

by REUTERS

Values



Highly Compliant
Compliant operation in good standing with 935 CMR 500 et seq .



High Quality Products
Safe, consistent, & effective cannabis



Scientific Rigor
Commitment to research & development



Social Impact
Commitment to community & the City of Boston