



MBTA SYMPHONY STATION ACCESSIBILITY IMPROVEMENTS

JULY 26, 2017



MBTA SYMPHONY STATION ACCESSIBILITY IMPROVEMENTS

Thornton
Tomasetti

Purpose

- Introduce Initial Concepts For Symphony Station Accessibility Improvements
- Begin Stakeholders Consensus Development

Goals

Receive From State Legislators, Stakeholders and Public

- Input
- Feedback
- Recommendations

Project Status:

- *Design Charrette – Complete*
- *Stakeholder/Public Process – Ongoing*
- *20% Design – Ongoing*
- Continued Design Development (Including Continued Stakeholder Outreach)



HORTICULTURAL HALL



NORTHBOUND ENTRANCE

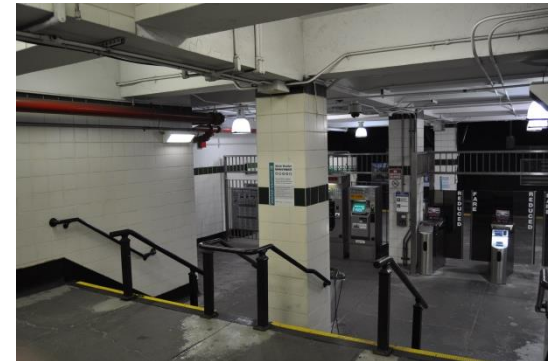


PROJECT STAKEHOLDERS

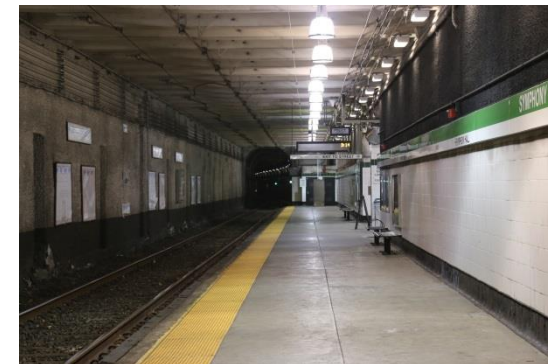
- Berklee College of Music
 - Boston Symphony Orchestra (Symphony Hall)
 - Boyd Smith (Church Park Apartments)
 - Colliers International (Christian Science Plaza)
 - Fenway Alliance
 - Huntington Theatre
 - Marcus Partners (Horticultural Hall)
 - New England Conservatory (NEC)
 - Northeastern University
 - Symphony Plaza East and West
-
- State and City Elected Officials
 - City of Boston
 - MassDOT – Highway Division
 - Utilities
 - Others Identified through Outreach Process

The scope of the project:

- Install four new elevators from street level to platform
- Construct new emergency exit stairs
- Construct new accessible restrooms
- Raise platform to 8" above track to accommodate low-floor cars
- Replace or improve existing stairs
- Other station improvements



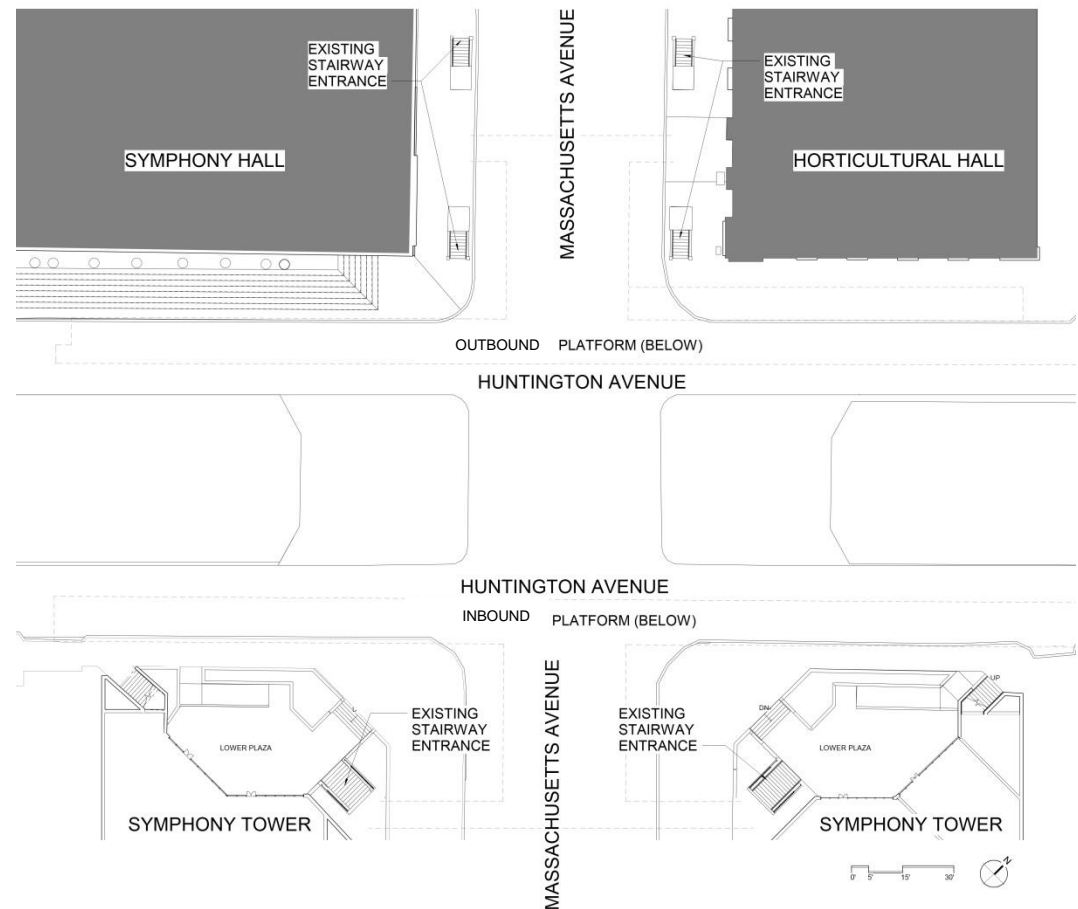
STATION LOBBY



STATION PLATFORM

Street Level

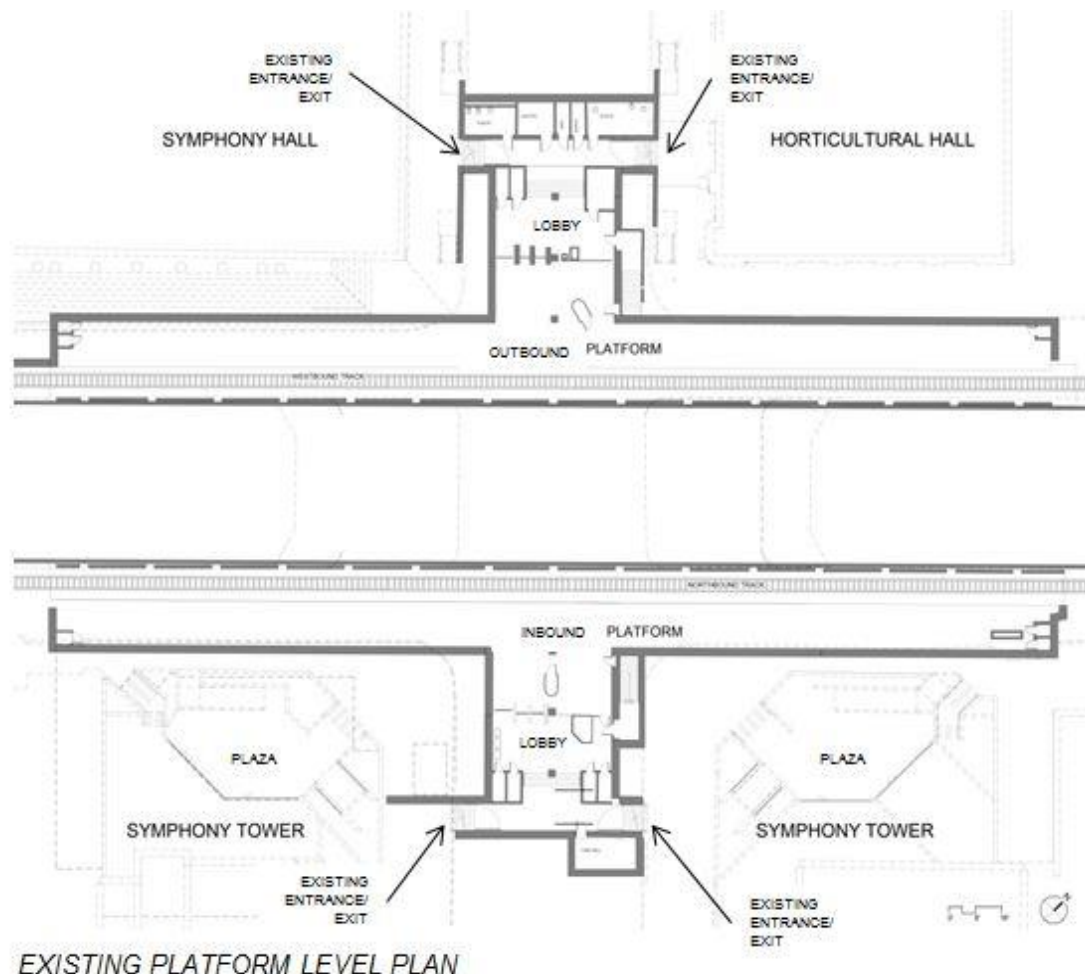
- Four stairway entrances at street level for westbound platform
- Two stairway entrances for northbound platform
- Inaccessible entrance/ exit to platforms below



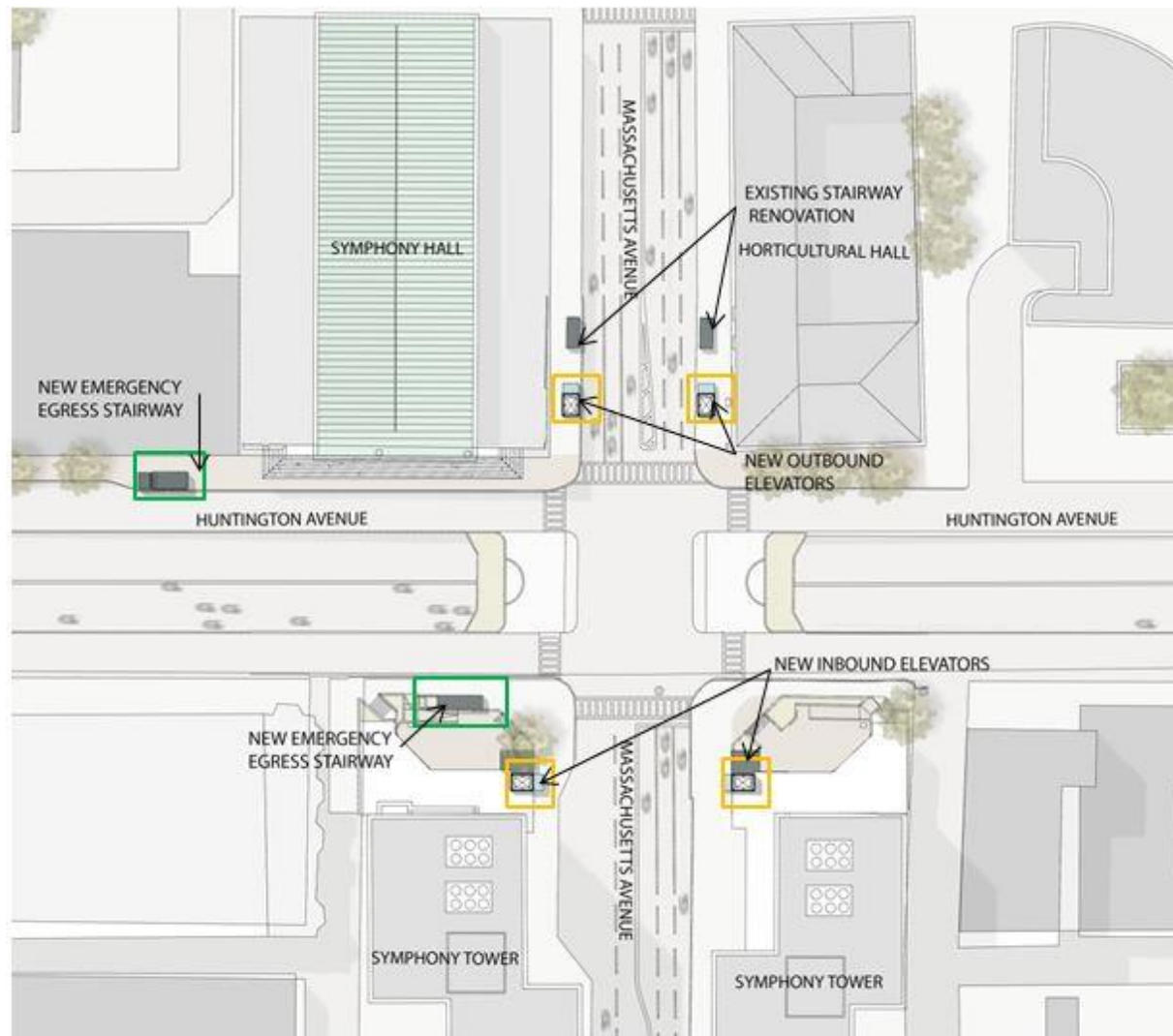
EXISTING STREET LEVEL PLAN

Platform Level

- Stair access only from street
- Platforms too low for new trains
- Inadequate emergency exits
- Non-functioning restrooms at outbound platform
- No restrooms at inbound platform
- Improved emergency lighting



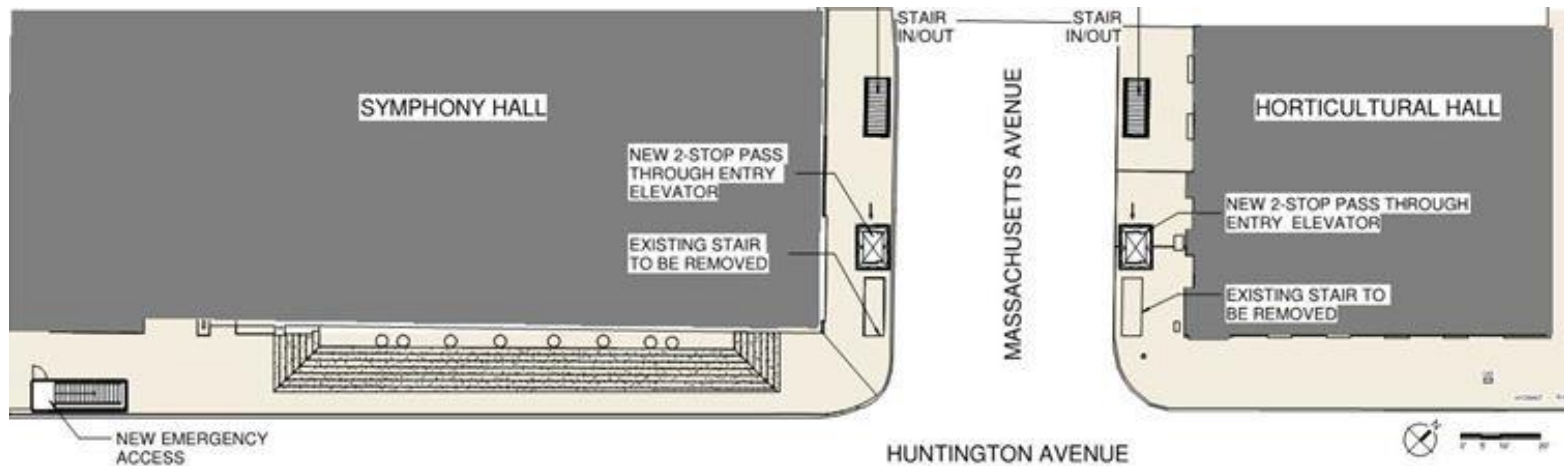
PROPOSED SYMPHONY STATION CONCEPTUAL DESIGN



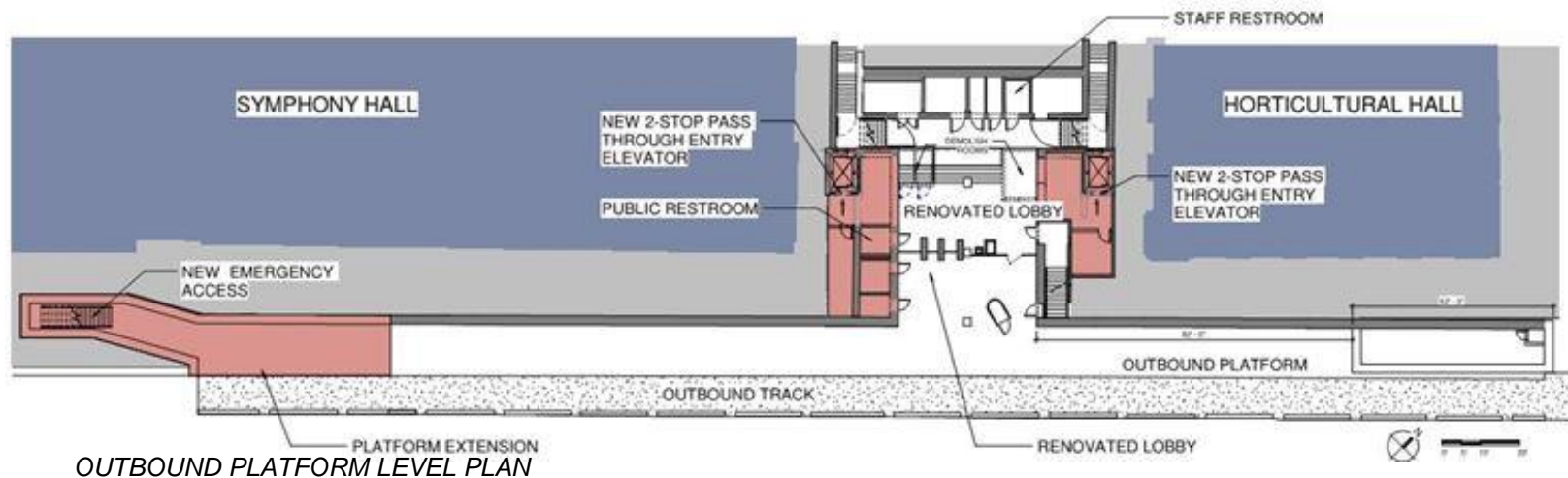
NEW SITE MAP

MBTA SYMPHONY STATION ACCESSIBILITY IMPROVEMENTS

PROPOSED OUTBOUND STATION CONCEPTUAL DESIGN

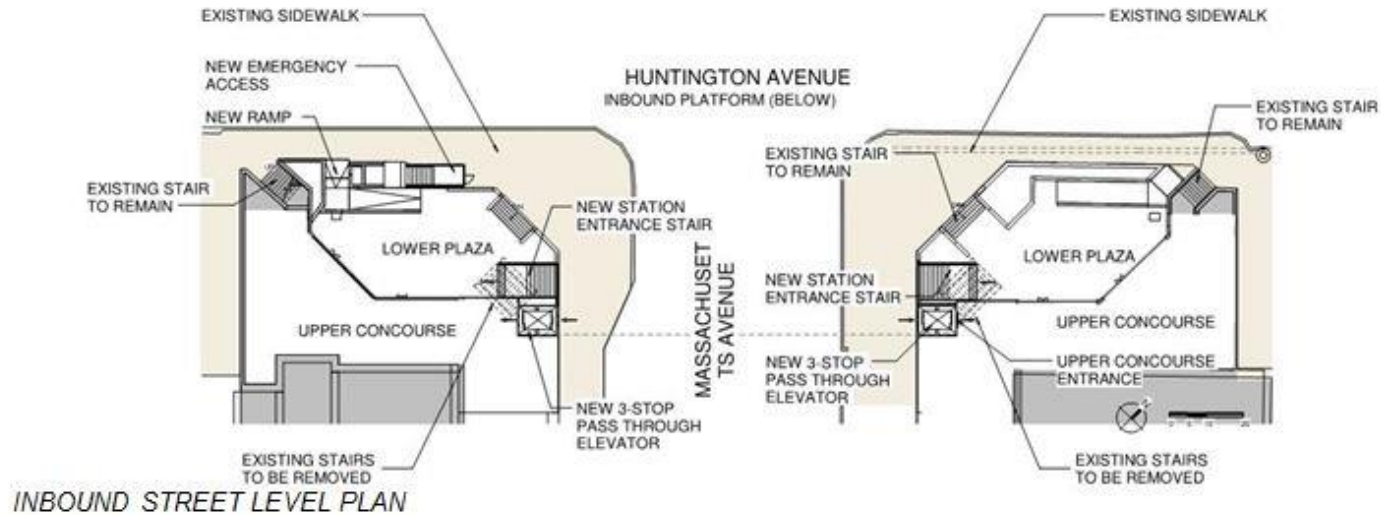


OUTBOUND STREET LEVEL PLAN

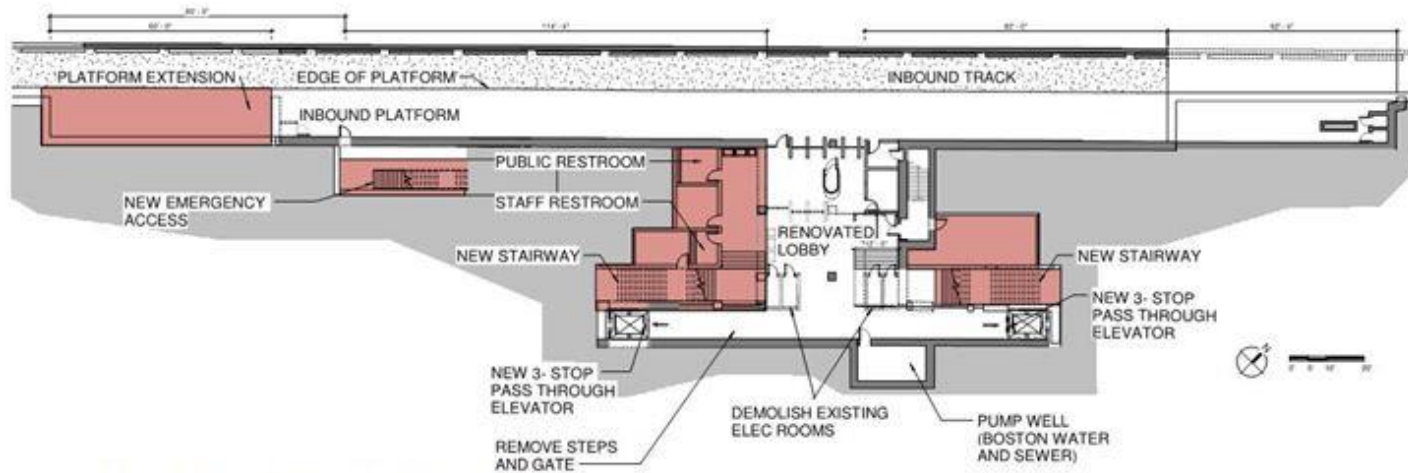


OUTBOUND PLATFORM LEVEL PLAN

PROPOSED INBOUND STATION CONCEPTUAL DESIGN



INBOUND STREET LEVEL PLAN



INBOUND PLATFORM LEVEL PLAN

MBTA SYMPHONY STATION ACCESSIBILITY IMPROVEMENTS

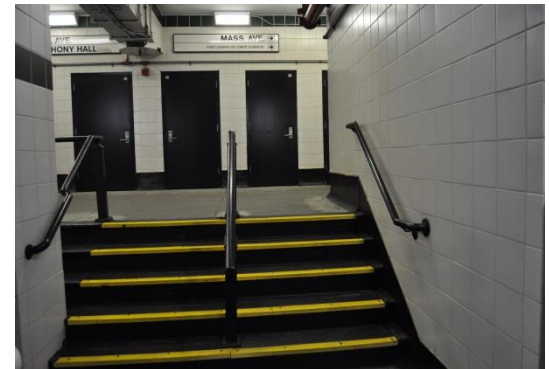
PROJECT BENEFITS



- Accessible Public Transportation Access to the Symphony Hall Area
- Two (2) Elevators at Each Platform (Four (4) Total)
- New Code Required Emergency Exit Stairs
- Convenient Access for Senior Community Complex
- New Restrooms
- Lobby Renovations
- New Platforms
- Improved Lighting
- Improved Signage and Wayfinding
- Improved Fire Alarm and Public Safety Upgrades
- Improved Public Announcement System
- Improved Station Finishes
- Improve Station Maintenance



SYMPHONY HALL



EXISTING STATION STAIRS

MBTA HEADHOUSE EXAMPLES



COPLEY STATION



PARK STREET STATION



KENMORE STATION



ARLINGTON STATION

MBTA SYMPHONY STATION ACCESSIBILITY IMPROVEMENTS



- Questions?
- Comments?
- Recommendations?