

**BOSTON
CHARLESGATE INTERCHANGE
(BOWKER OVERPASS)**

STATE	FED. AID PROJ. NO.	SHEET NO.	TOTAL SHEETS
MA	NHP-002S (609)	9	37
PROJECT FILE NO. 606448			

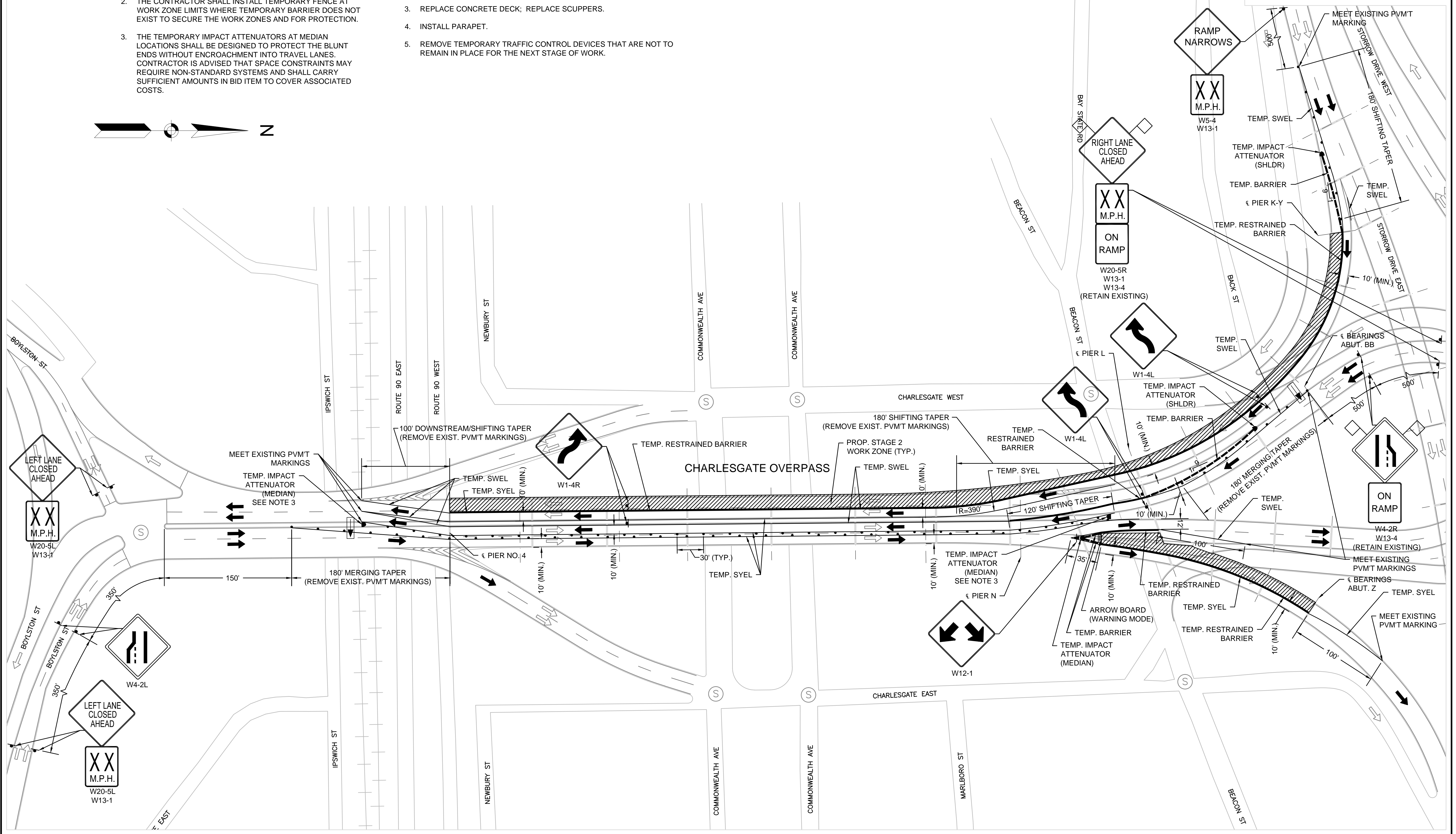
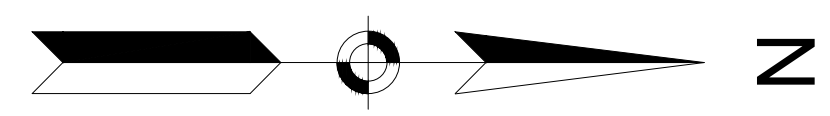
TEMPORARY TRAFFIC CONTROL PLANS - 3

NOTES:

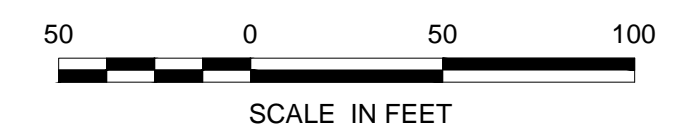
1. THE CONTRACTOR SHALL REMOVE EXISTING CONFLICTING PAVEMENT MARKINGS USING STANDARD METHODS.
2. THE CONTRACTOR SHALL INSTALL TEMPORARY FENCE AT WORK ZONE LIMITS WHERE TEMPORARY BARRIER DOES NOT EXIST TO SECURE THE WORK ZONES AND FOR PROTECTION.
3. THE TEMPORARY IMPACT ATTENUATORS AT MEDIAN LOCATIONS SHALL BE DESIGNED TO PROTECT THE BLUNT ENDS WITHOUT ENCROACHMENT INTO TRAVEL LANES. CONTRACTOR IS ADVISED THAT SPACE CONSTRAINTS MAY REQUIRE NON-STANDARD SYSTEMS AND SHALL CARRY SUFFICIENT AMOUNTS IN BID ITEM TO COVER ASSOCIATED COSTS.

SUGGESTED STAGE 2 SEQUENCE OF CONSTRUCTION:

1. INSTALL TEMPORARY TRAFFIC CONTROL DEVICES.
2. REMOVE PAVEMENT; DEMOLISH BRIDGE DECK AND PARAPET.
3. REPLACE CONCRETE DECK; REPLACE SCUPPERS.
4. INSTALL PARAPET.
5. REMOVE TEMPORARY TRAFFIC CONTROL DEVICES THAT ARE NOT TO REMAIN IN PLACE FOR THE NEXT STAGE OF WORK.



STAGE 2



**BOSTON
CHARLESGATE INTERCHANGE
(BOWKER OVERPASS)**

STATE	FED. AID PROJ. NO.	SHEET NO.	TOTAL SHEETS
MA	NHP-002S (609)	10	37
PROJECT FILE NO. 606448			

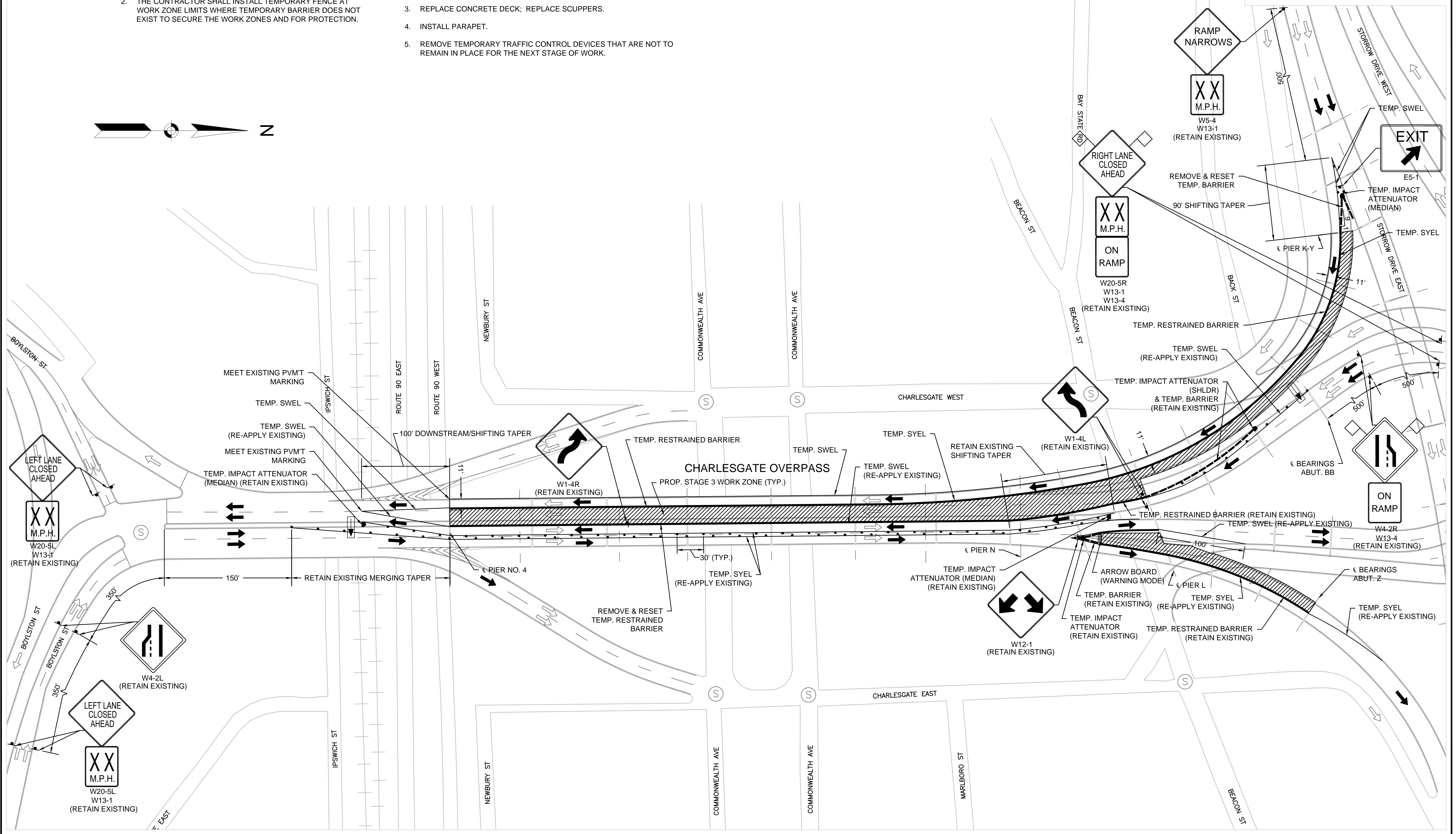
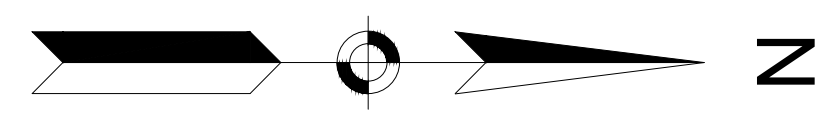
TEMPORARY TRAFFIC CONTROL PLANS - 4

NOTES:

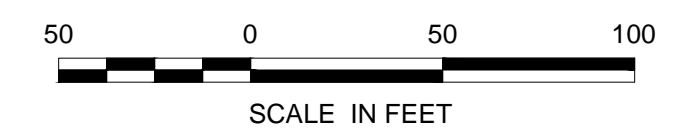
1. THE CONTRACTOR SHALL REMOVE EXISTING CONFLICTING PAVEMENT MARKINGS USING STANDARD METHODS.
2. THE CONTRACTOR SHALL INSTALL TEMPORARY FENCE AT WORK ZONE LIMITS WHERE TEMPORARY BARRIER DOES NOT EXIST TO SECURE THE WORK ZONES AND FOR PROTECTION.

SUGGESTED STAGE 3 SEQUENCE OF CONSTRUCTION:

1. INSTALL TEMPORARY TRAFFIC CONTROL DEVICES.
2. REMOVE PAVEMENT; DEMOLISH BRIDGE DECK AND PARAPET.
3. REPLACE CONCRETE DECK; REPLACE SCUPPERS.
4. INSTALL PARAPET.
5. REMOVE TEMPORARY TRAFFIC CONTROL DEVICES THAT ARE NOT TO REMAIN IN PLACE FOR THE NEXT STAGE OF WORK.



STAGE 3



**BOSTON
CHARLESGATE INTERCHANGE
(BOWKER OVERPASS)**

STATE	FED. AID PROJ. NO.	SHEET NO.	TOTAL SHEETS
MA	NHP-002S (609)	11	37
PROJECT FILE NO. 606448			

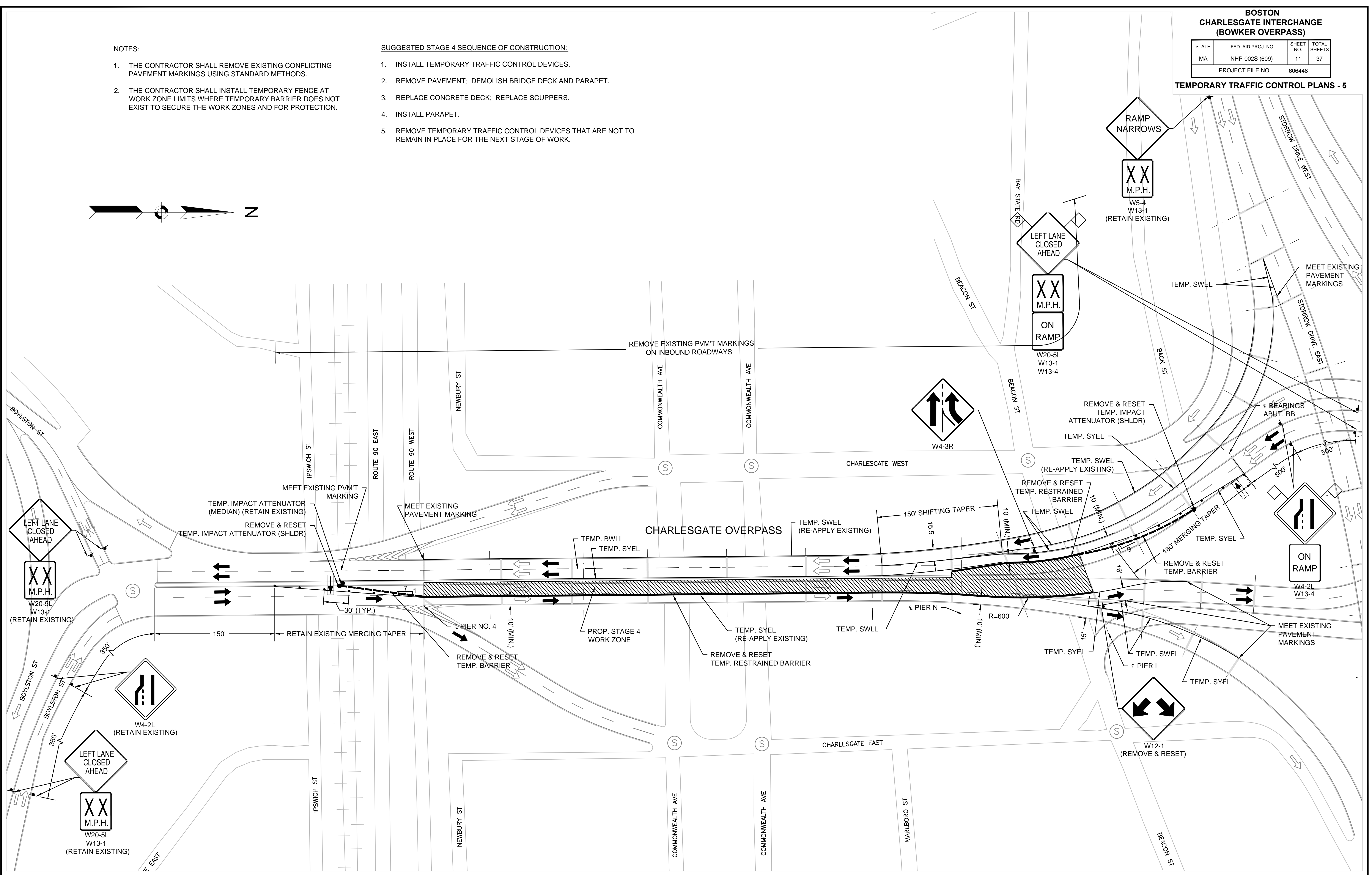
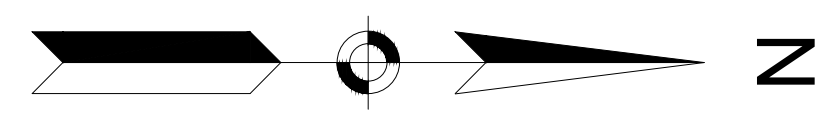
TEMPORARY TRAFFIC CONTROL PLANS - 5

NOTES:

1. THE CONTRACTOR SHALL REMOVE EXISTING CONFLICTING PAVEMENT MARKINGS USING STANDARD METHODS.
2. THE CONTRACTOR SHALL INSTALL TEMPORARY FENCE AT WORK ZONE LIMITS WHERE TEMPORARY BARRIER DOES NOT EXIST TO SECURE THE WORK ZONES AND FOR PROTECTION.

SUGGESTED STAGE 4 SEQUENCE OF CONSTRUCTION:

1. INSTALL TEMPORARY TRAFFIC CONTROL DEVICES.
2. REMOVE PAVEMENT; DEMOLISH BRIDGE DECK AND PARAPET.
3. REPLACE CONCRETE DECK; REPLACE SCUPPERS.
4. INSTALL PARAPET.
5. REMOVE TEMPORARY TRAFFIC CONTROL DEVICES THAT ARE NOT TO REMAIN IN PLACE FOR THE NEXT STAGE OF WORK.



STAGE 4



**BOSTON
CHARLESGATE INTERCHANGE
(BOWKER OVERPASS)**

STATE	FED. AID PROJ. NO.	SHEET NO.	TOTAL SHEETS
MA	NHP-002S (609)	12	37
PROJECT FILE NO. 606448			

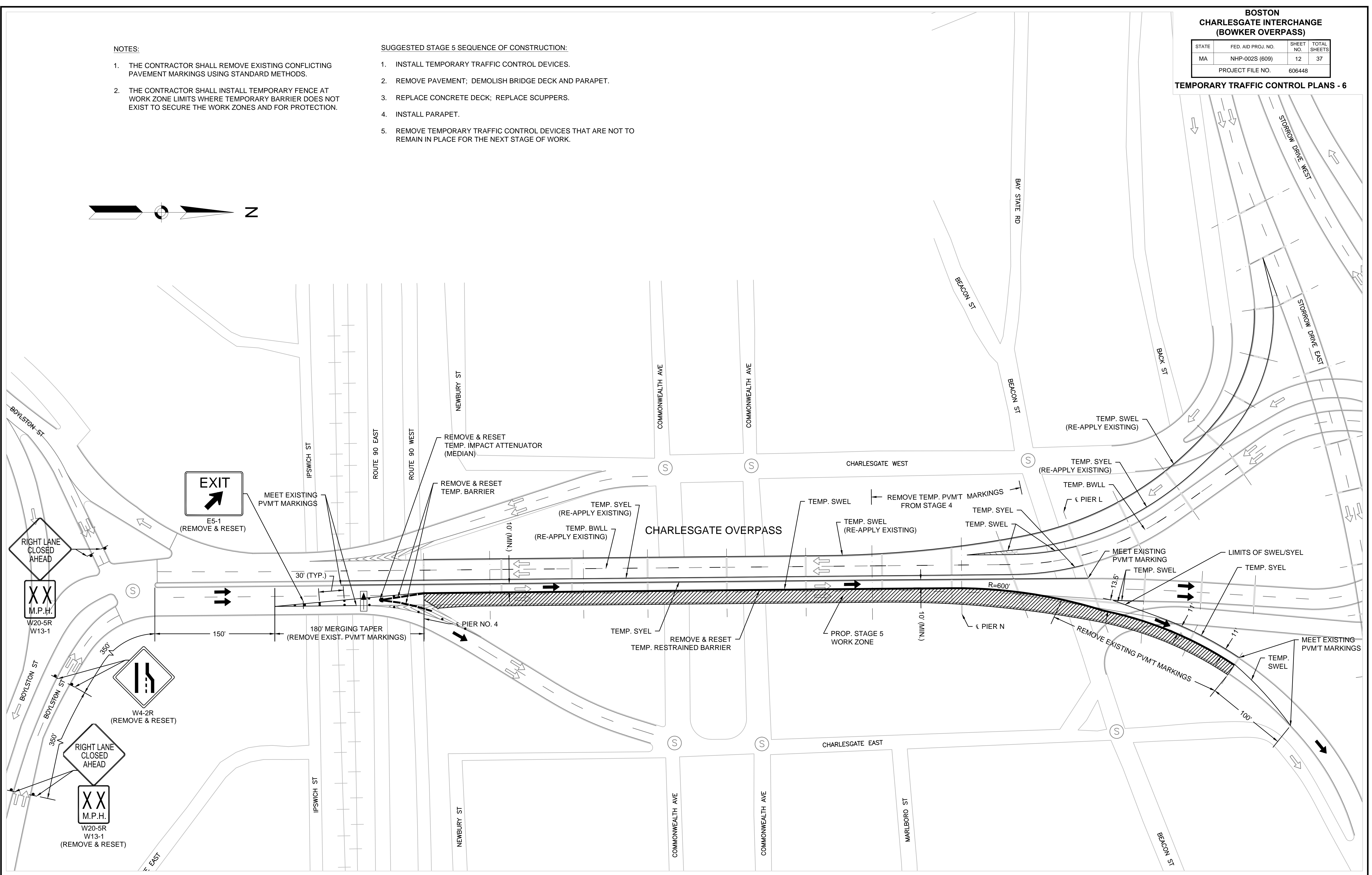
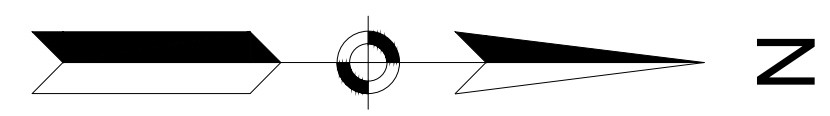
TEMPORARY TRAFFIC CONTROL PLANS - 6

NOTES:

1. THE CONTRACTOR SHALL REMOVE EXISTING CONFLICTING PAVEMENT MARKINGS USING STANDARD METHODS.
2. THE CONTRACTOR SHALL INSTALL TEMPORARY FENCE AT WORK ZONE LIMITS WHERE TEMPORARY BARRIER DOES NOT EXIST TO SECURE THE WORK ZONES AND FOR PROTECTION.

SUGGESTED STAGE 5 SEQUENCE OF CONSTRUCTION:

1. INSTALL TEMPORARY TRAFFIC CONTROL DEVICES.
2. REMOVE PAVEMENT; DEMOLISH BRIDGE DECK AND PARAPET.
3. REPLACE CONCRETE DECK; REPLACE SCUPPERS.
4. INSTALL PARAPET.
5. REMOVE TEMPORARY TRAFFIC CONTROL DEVICES THAT ARE NOT TO REMAIN IN PLACE FOR THE NEXT STAGE OF WORK.



STAGE 5

