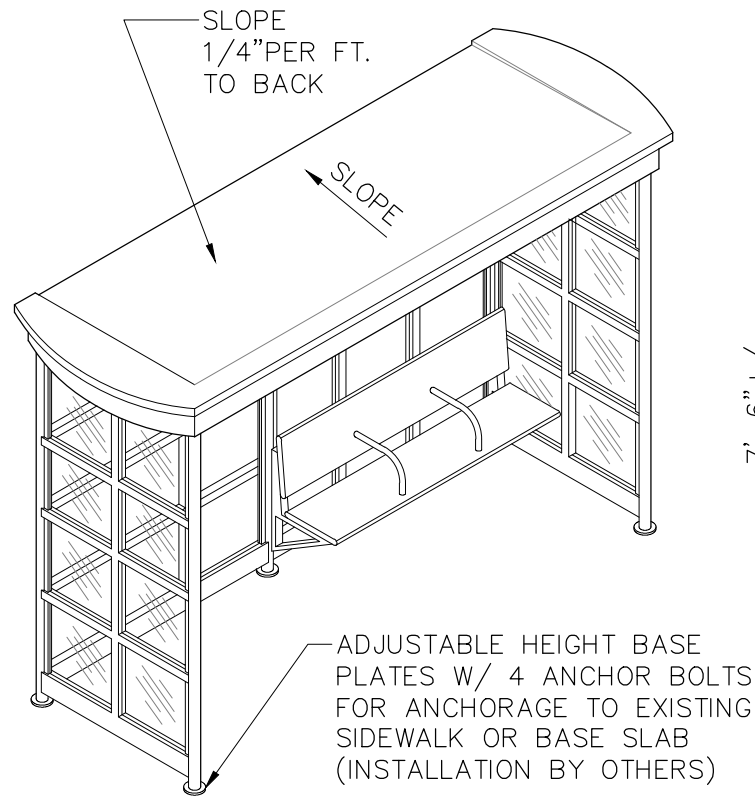
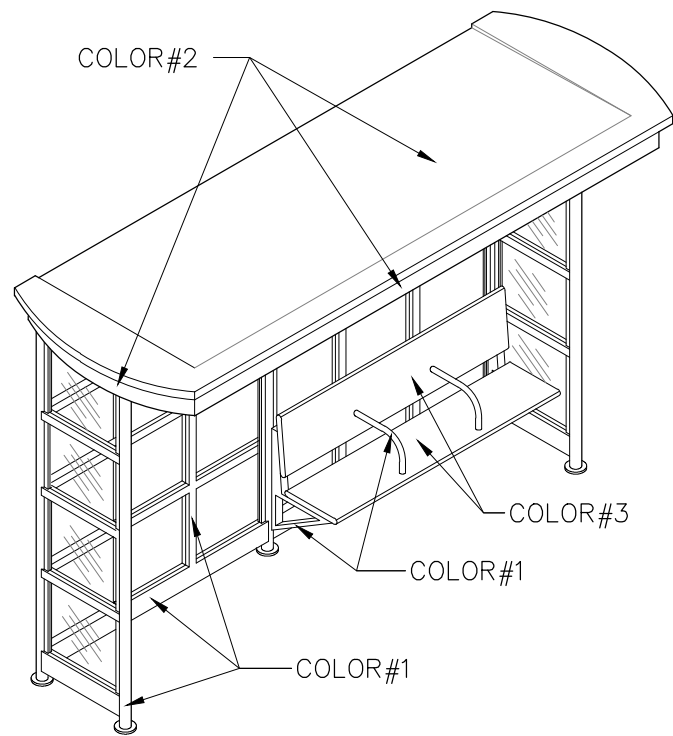


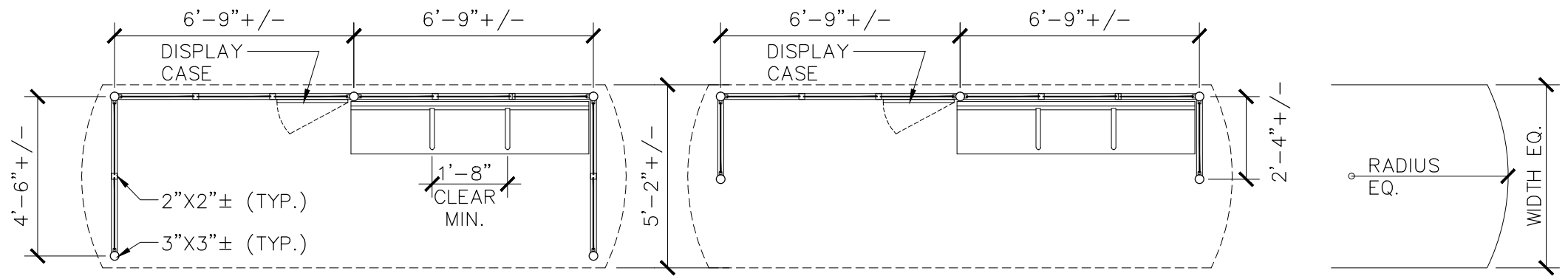
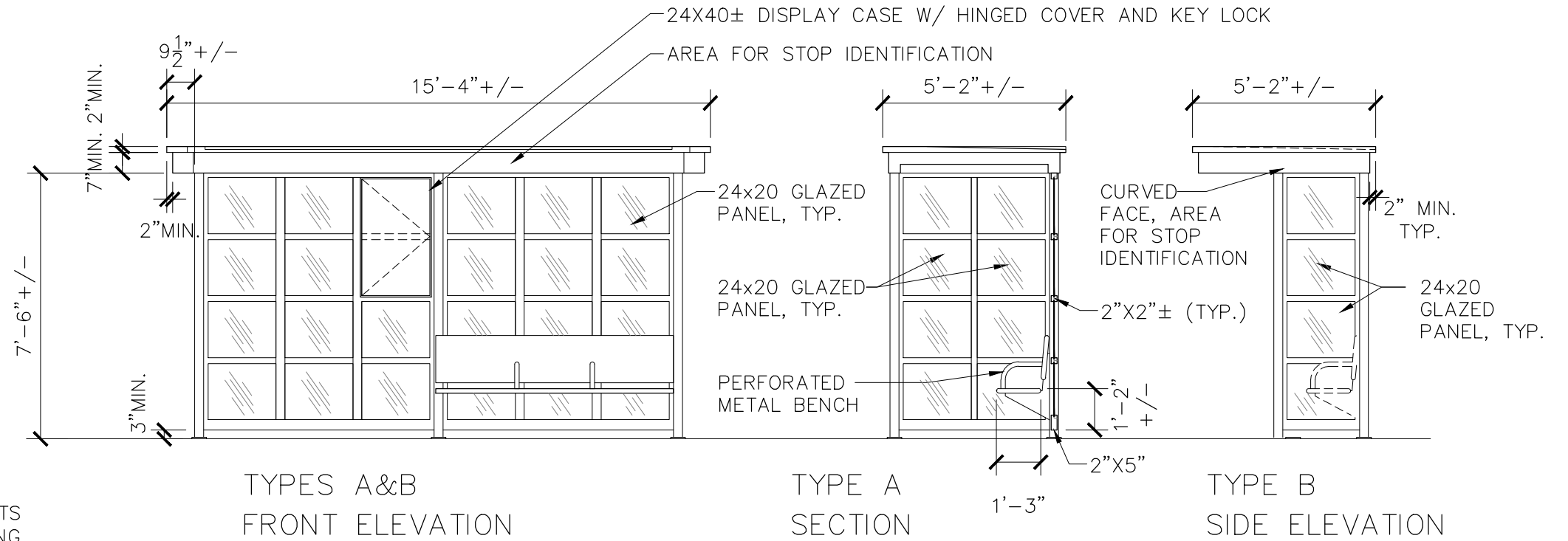
PLOT DATE= 8/21/2012 4:50:45 PM USER=DIANA HUANG FILENAME=\\filedrawings\clients\MBTA\2009215 - CM-PM Oversight for ARRA Projects\architectural\Bus Shelter Project\Final.dwg



TYPE A - AXON VIEW



TYPE B - AXON VIEW



THE RADIUS OF THE CURVED ROOF END IS EQUAL TO THE WIDTH.

NOTES:

THE DIMENSIONS SHOWN WITH +/- AND THE SIZE GIVEN FOR FRAMING MEMBERS INDICATE THE DESIGN INTENT. THE SIZE OF THE GLAZED PANELS SHALL BE CONSIDERED THE CRITICAL DIMENSION AS WELL AS ANY MINIMUM DIMENSIONS GIVEN. SPACING AND SIZING OF FRAMING MEMBERS SHALL BE DESIGNED TO RECEIVE EITHER 24"X20"X1/4" POLYCARBONATE OR TEMPERED GLASS PANELS AS SHOWN, SEE SPECIFICATION.

PROVIDE SOLAR-POWERED LIGHTING SYSTEM PER SPECIFICATIONS, NOT SHOWN, SEE SPECIFICATION.

THE DESIGN INTENT IS FOR COLOR#2 (THE ROOF AND FASCIA) TO BE BLACK AND COLOR#1 (FRAME) TO BE SILVER/ANNODIZED ALUMINUM, SEE SPECIFICATION.



Scale	1/4"=1'-0"	Client	MASSACHUSETTS BAY TRANSPORTATION AUTHORITY
Date	AUGUST 21, 2012	Project	
Job No.	2009215	Project	DESIGN INTENT DRAWINGS
Designed by	JEP	Drawing	
Drawn by	JEP		
Checked by	AM		
Approved by	AM		