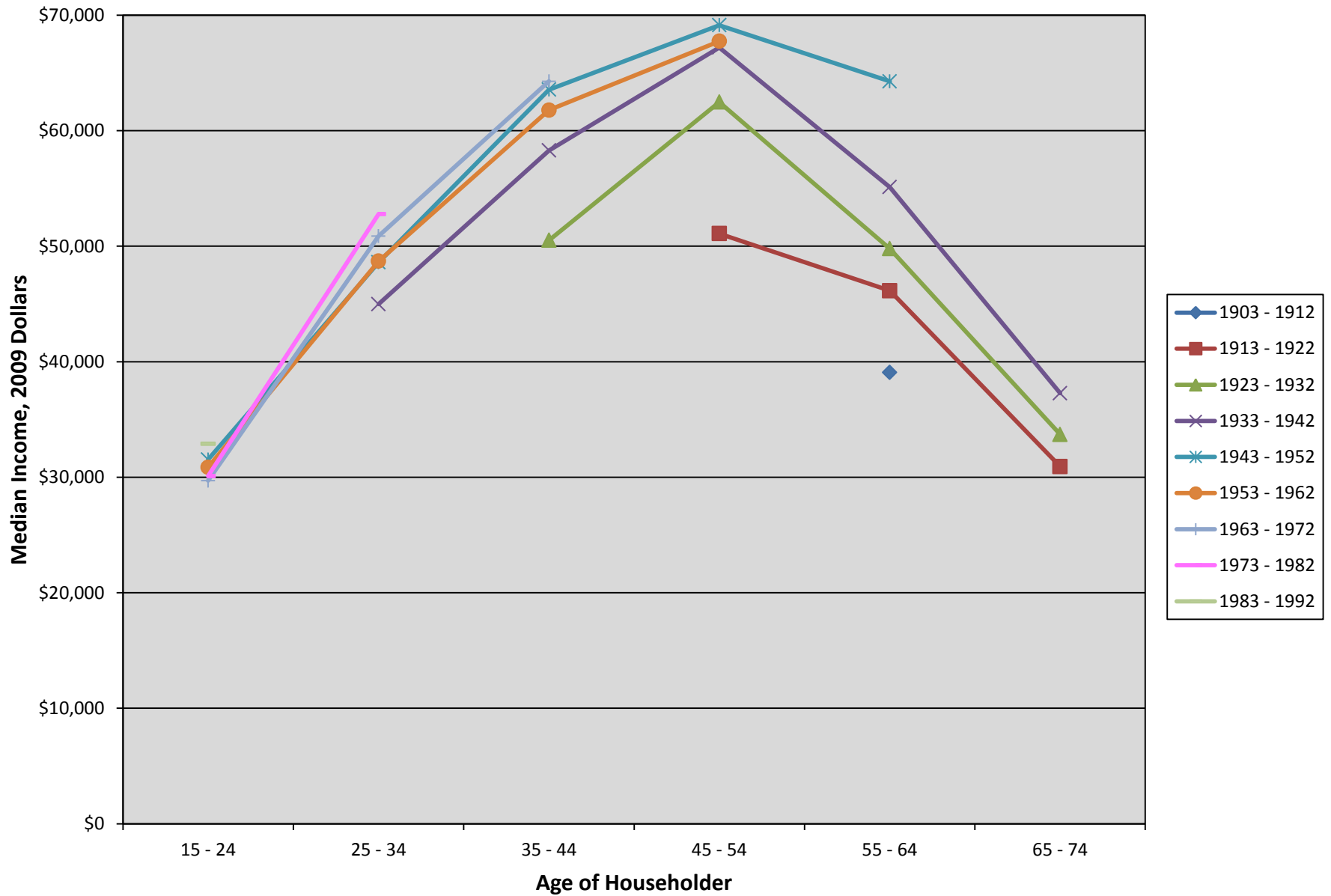
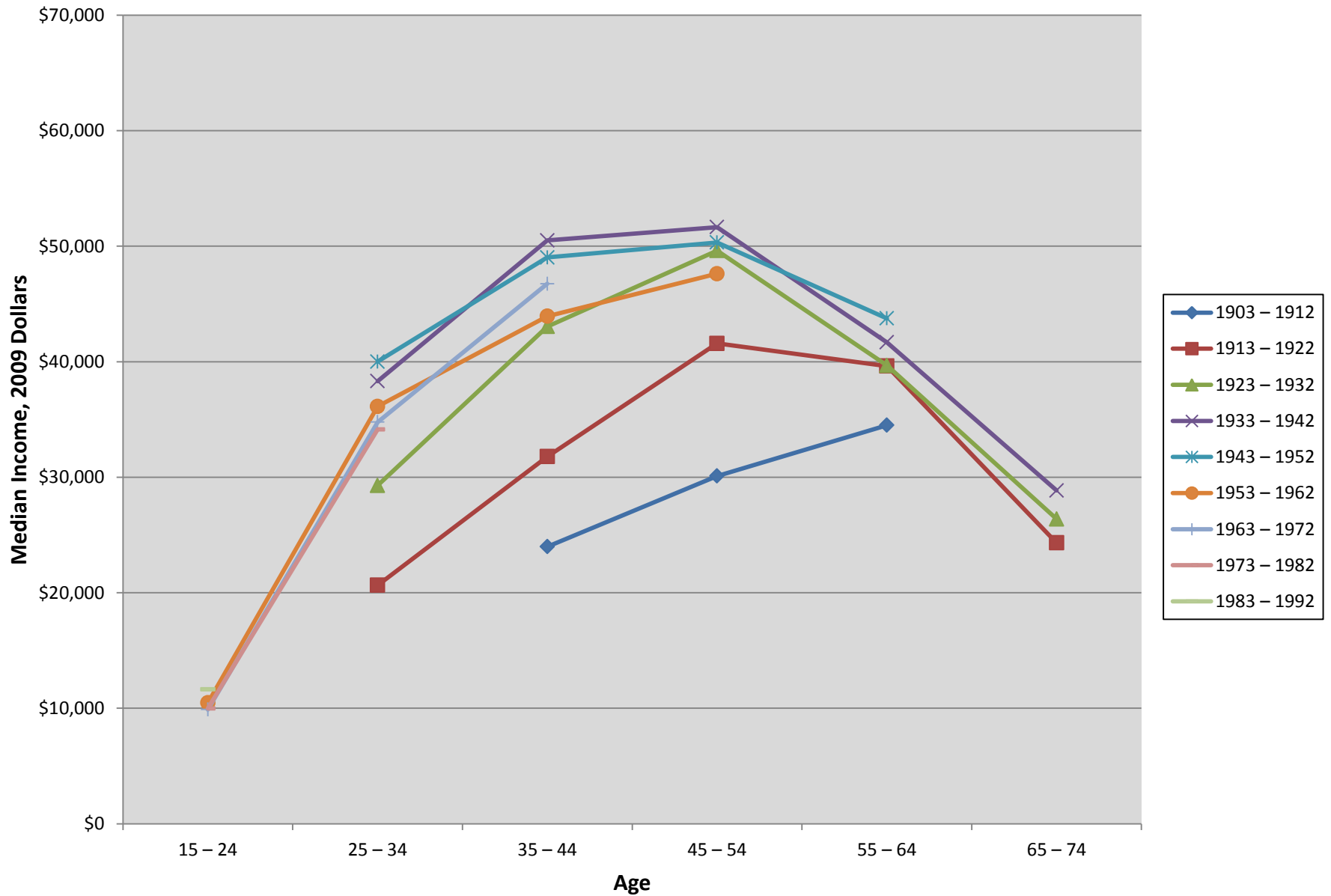


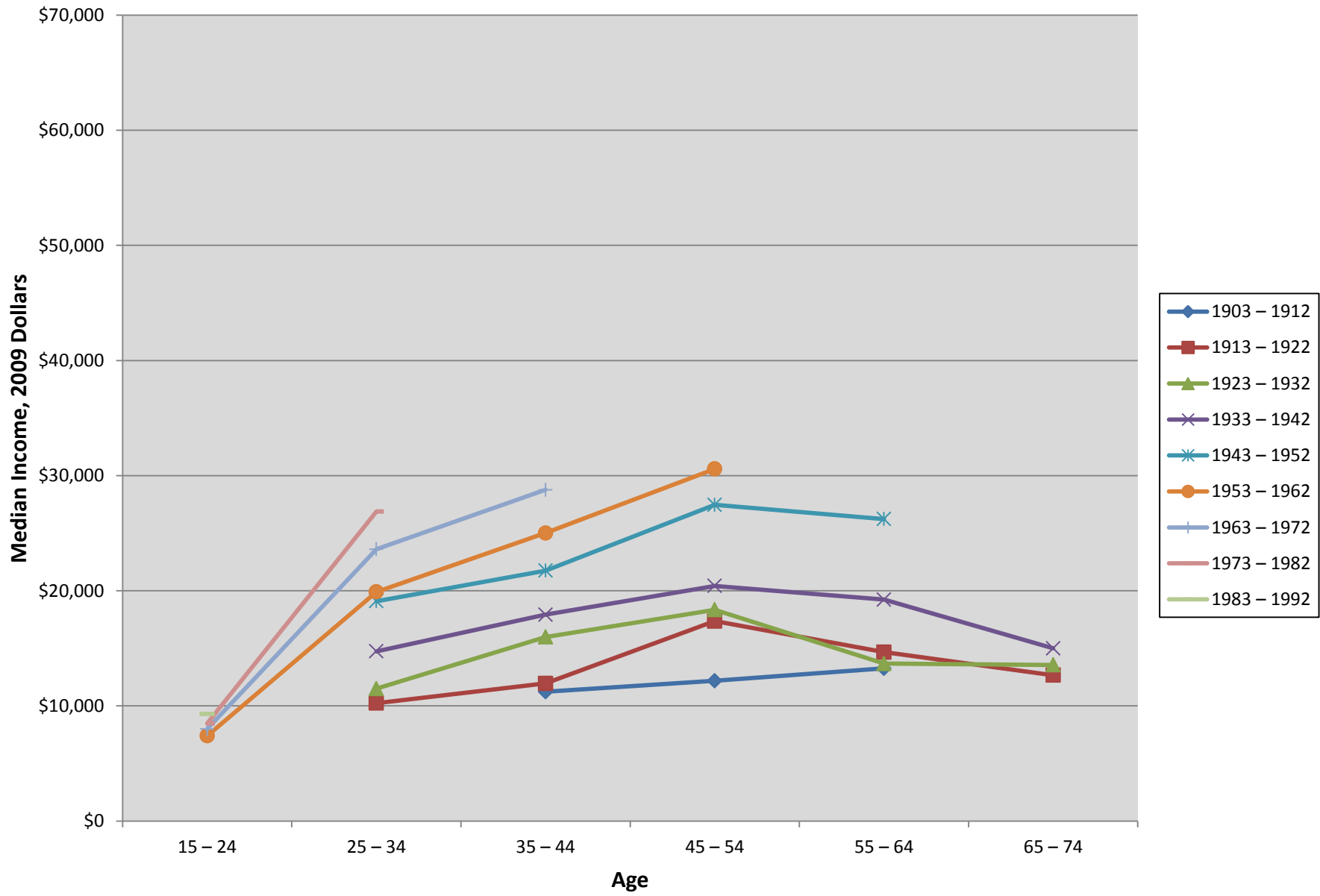
Trends in Median Household Income by Birth Year



Trends in Median Men's Income by Birth Year



Trends in Median Women's Income by Birth Year



Household Median Incomes in 2009 Dollars at Different Ages, based on year of birth (rows = age, columns = birth years)									
	1903 - 1912	1913 - 1922	1923 - 1932	1933 - 1942	1943 - 1952	1953 - 1962	1963 - 1972	1973 - 1982	1983 - 1992
15 - 24					31,528	30,858	29,706	30,092	32,886
25 - 34				44,987	48,604	48,706	50,866	52,775	
35 - 44			50,512	58,280	63,551	61,773	64,266		
45 - 54		51,085	62,474	67,199	69,123	67,734			
55 - 64	39,063	46,141	49,779	55,106	64,266				
65 - 74		30,926	33,701	37,274					

Source: <http://www.census.gov/hhes/www/income/data/historical/household/index.html>

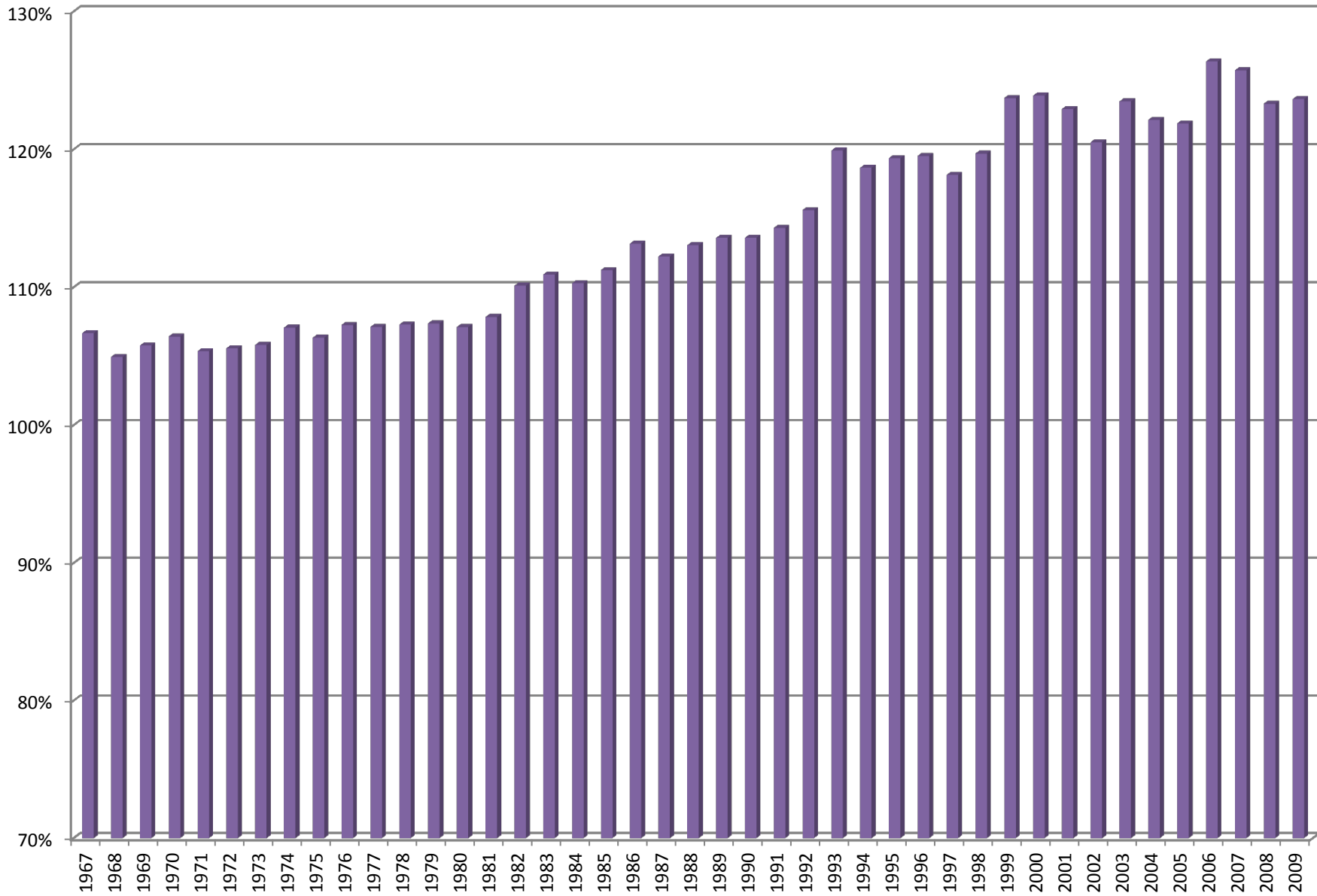
Men's Median Incomes in 2009 Dollars at Different Ages, based on year of birth (rows = age, columns = birth years)											
	1883 - 1892	1893 - 1902	1903 - 1912	1913 - 1922	1923 - 1932	1933 - 1942	1943 - 1952	1953 - 1962	1963 - 1972	1973 - 1982	1983 - 1992
15 - 24								10,476	9,894	9,989	11,640
25 - 34				20,650	29,289	38,322	40,006	36,129	34,771	34,138	
35 - 44			23,989	31,787	43,039	50,501	49,029	43,940	46,748		
45 - 54		22,606	30,106	41,585	49,618	51,649	50,324	47,611			
55 - 64	19,765	24,660	34,506	39,624	39,675	41,674	43,748				
65 - 74				24,317	26,384	28,854					

Women's Median Incomes in 2009 Dollars at Different Ages, based on year of birth (rows = age, columns = birth years)											
	1883 - 1892	1893 - 1902	1903 - 1912	1913 - 1922	1923 - 1932	1933 - 1942	1943 - 1952	1953 - 1962	1963 - 1972	1973 - 1982	1983 - 1992
15 - 24								7,408	7,992	8,483	9,303
25 - 34				10,245	11,502	14,745	19,101	19,906	23,604	26,879	
35 - 44			11,231	11,951	15,985	17,923	21,748	25,020	28,766		
45 - 54		10,903	12,179	17,366	18,351	20,421	27,466	30,585			
55 - 64	8,112	8,990	13,257	14,671	13,672	19,229	26,233				
65 - 74				12,666	13,564	14,997					

Source: <http://www.census.gov/hhes/www/income/data/historical/people/index.html>

Compiled by Andrew Apostolos (andrew.apostolos@gmail.com)

Mean Income as a Percent of Median Income (Households)



Year	Mean / Median	Year	Mean / Median
1967	107%	1989	114%
1968	105%	1990	114%
1969	106%	1991	114%
1970	106%	1992	116%
1971	105%	1993	120%
1972	106%	1994	119%
1973	106%	1995	119%
1974	107%	1996	120%
1975	106%	1997	118%
1976	107%	1998	120%
1977	107%	1999	124%
1978	107%	2000	124%
1979	107%	2001	123%
1980	107%	2002	121%
1981	108%	2003	123%
1982	110%	2004	122%
1983	111%	2005	122%
1984	110%	2006	126%
1985	111%	2007	126%
1986	113%	2008	123%
1987	112%	2009	124%
1988	113%		