

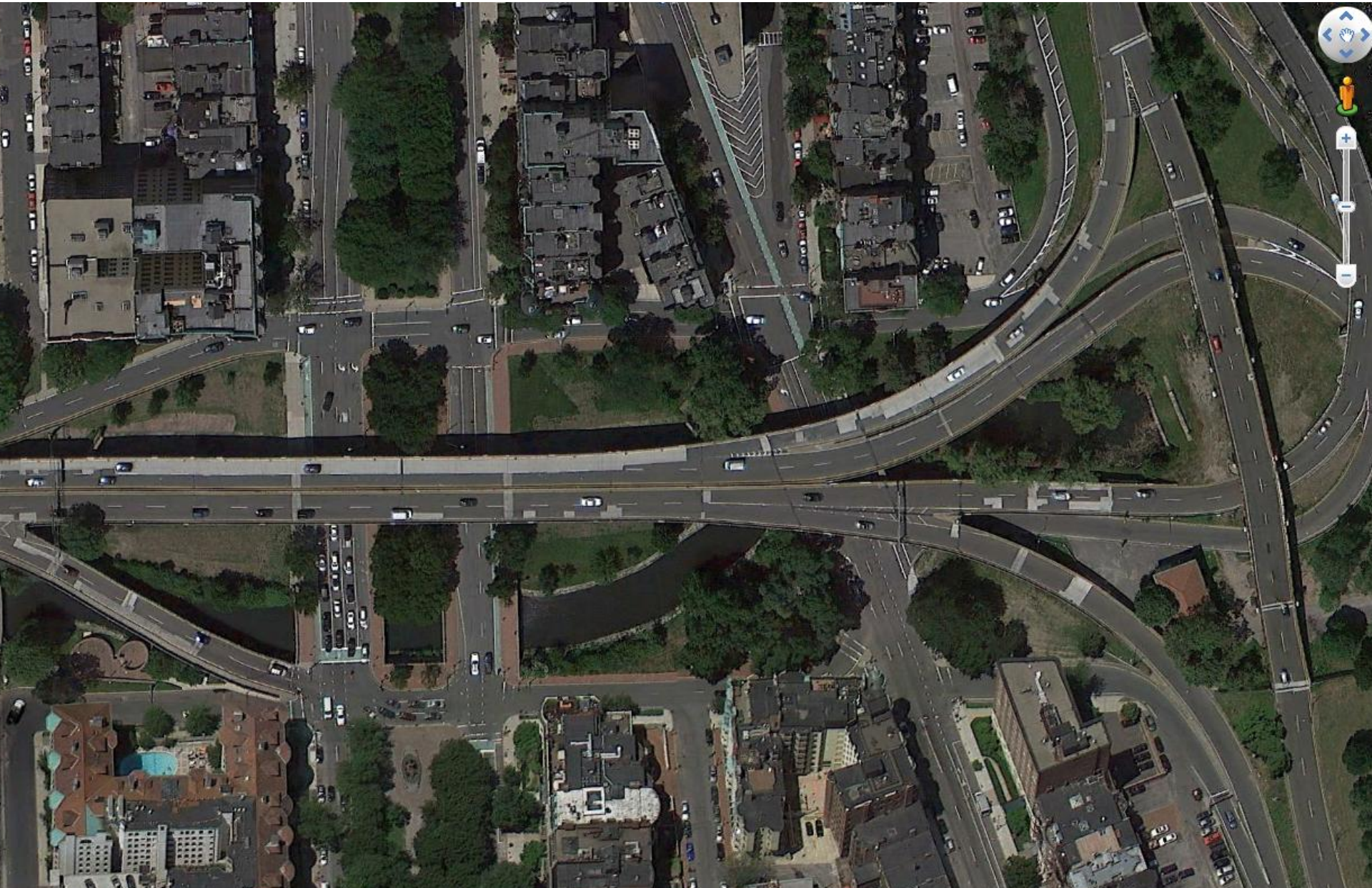
**Now is the time to liberate Charlesgate Park,
a jewel of the American urban landscape ...**



**... currently buried beneath the
Bowker Overpass.**



Aerial view of Charlesgate Park, buried beneath the Bowker Overpass.



**Overwhelmed and buried:
the view from Charlesgate Park.**



**The Bowker Overpass:
ugly, obsolete, and in constant need of repair.**



If other cities can do it, why can't we?

**San Francisco's Embarcadero Freeway:
built directly in front of the landmark Ferry Building**



**San Francisco's Embarcadero today:
cultural hub and tourist attraction.**





Seoul, South Korea:
The Cheonggyecheon Highway before demolition.



**Seoul, South Korea:
the Cheonggyecheon Stream restored.**



**We've already done here it in Boston too, with great success!
Do you miss the elevated Central Artery?**



The Rose Kennedy Greenway.



**Now it's time to demolish
the Bowker Overpass
and to restore Charlesgate Park.**

CHARLESGATE PARK



Designed by Evan Hammond, Boston Architectural College

What is Charlesgate Park?

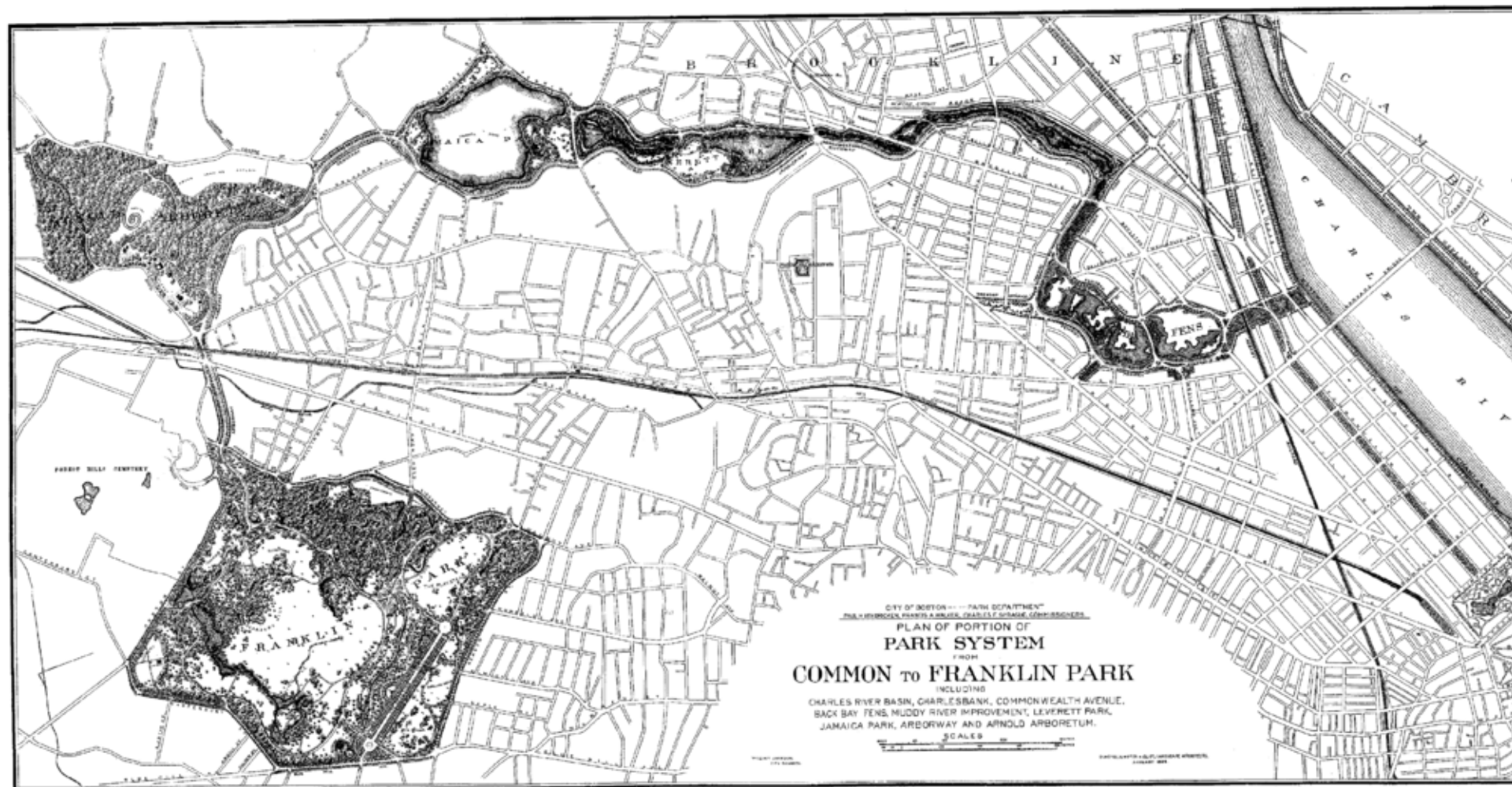
Why is it so important?

Charlesgate Park began its life back in the 1870s, when the City of Boston began to plan a beautiful new park for its Back Bay neighborhood.

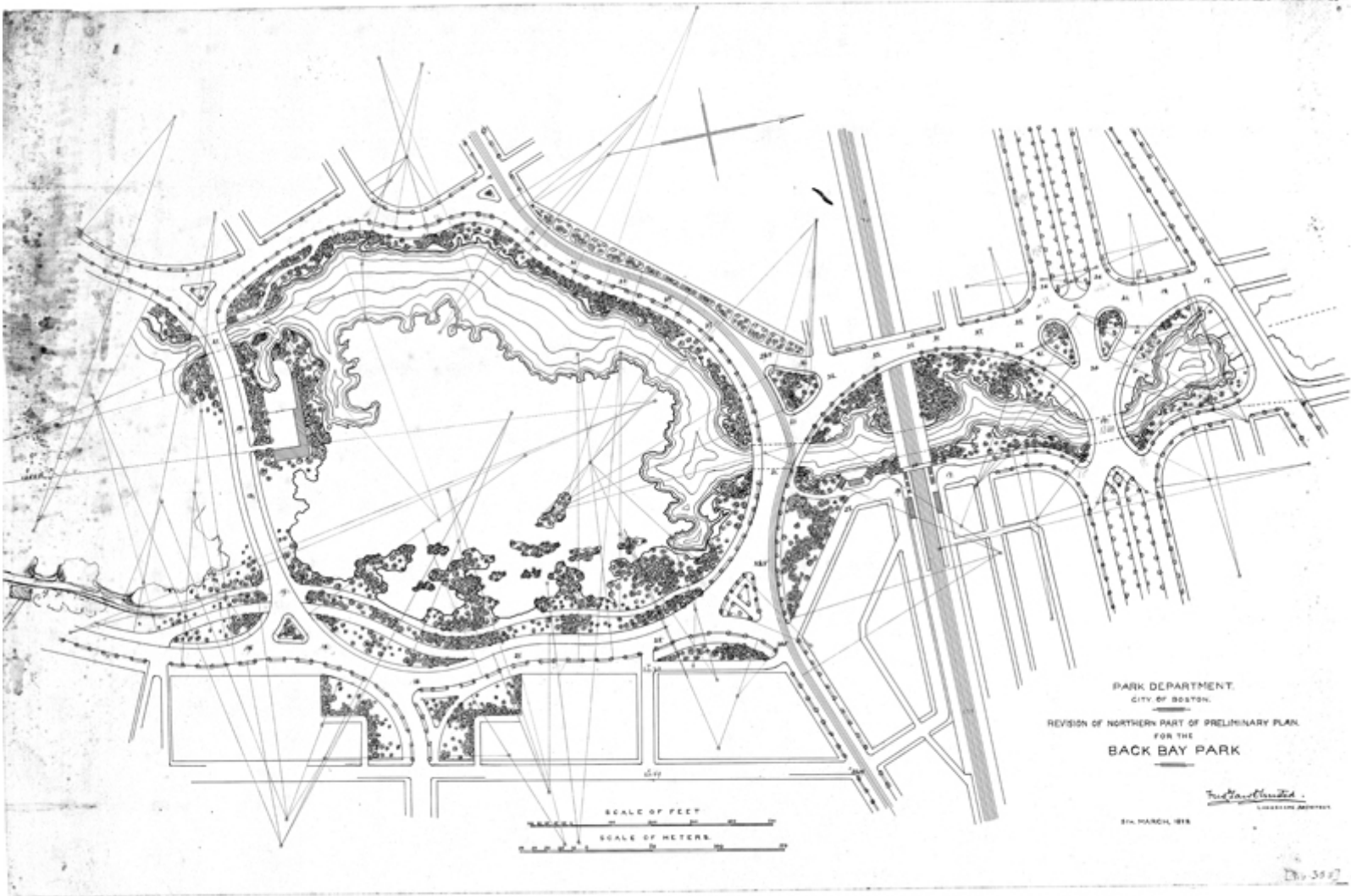
**The city hired America's greatest park designer,
Fredrick Law Olmsted.**



The result was Boston's revolutionary, integrated "park system,"
now known as the Emerald Necklace.

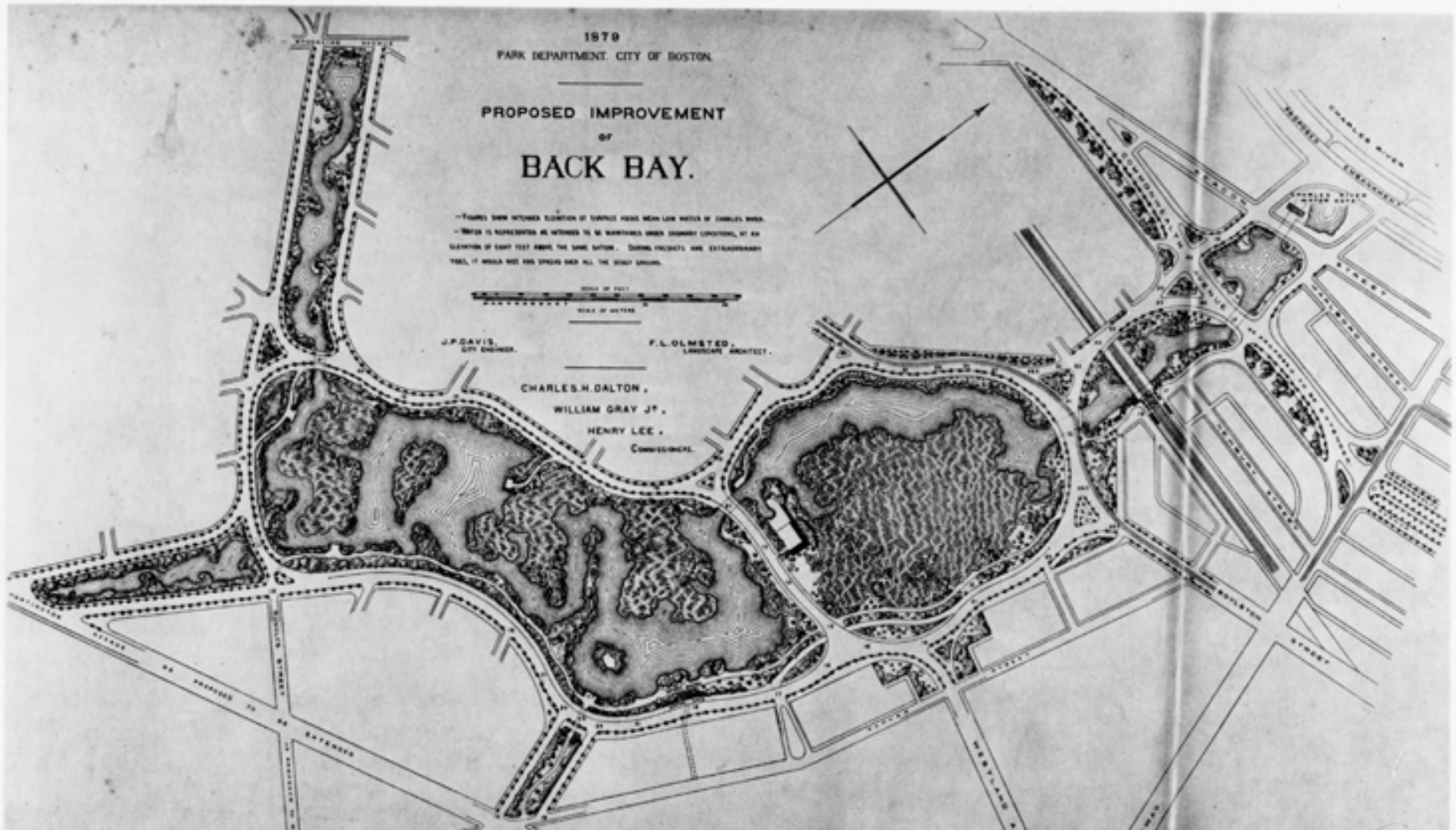


The key link in Olmsted's park system was what he called the "Beacon Entrance," the area we now know as "Charlesgate."



Charlesgate is the only part of the Emerald Necklace that was designed to integrate directly with the fabric of the city itself.

Olmsted called for the Commonwealth Avenue Mall to be extended beyond Massachusetts Avenue, where it would intersect with Charlesgate Park.



**Olmsted's Charlesgate was a huge success.
Bostonians flocked there to enjoy the park.**



**Developers built hotels and apartment buildings.
The Charlesgate neighborhood became very fashionable.**



911936 THE CHARLESGATE, DETROIT

DETROIT PHOTOGRAPHIC CO.

Somerset Hotel

BOSTON, MASS.



CardCow.com

52:—COMMONWEALTH AVE., BOSTON. MASS.



RUINING CHARLESGATE:

Fast forward to the 1960s, when highway designers prioritized automobile traffic over people and parks.



The Bowker Overpass is an aesthetic disaster.



The Bowker Overpass has caused environmental degradation.





The Bowker Overpass is also falling apart!

The good news is that this gives us an opportunity to tear down this eyesore rather than rebuilding it.



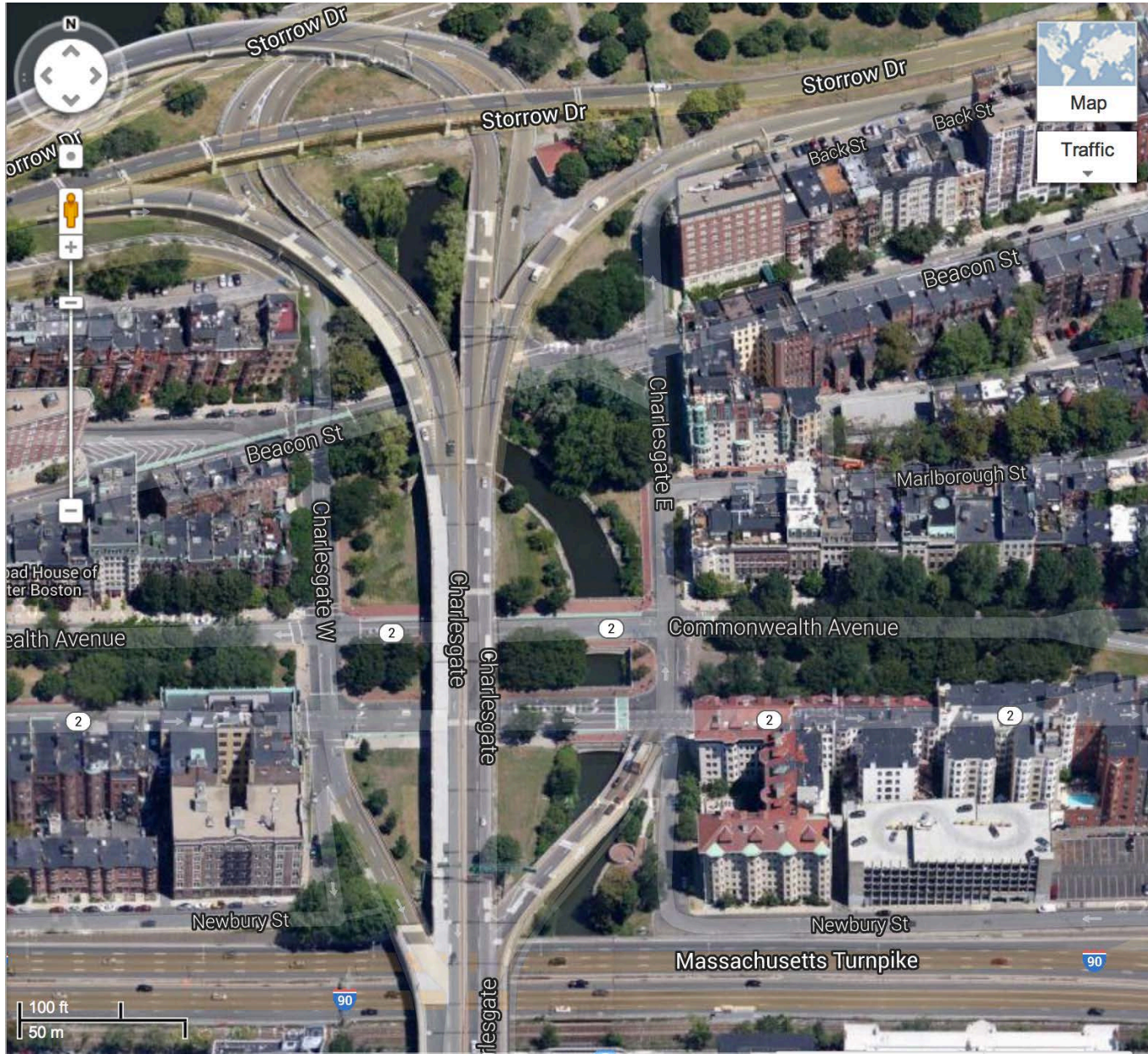


**Working together, we can
RESTORE CHARLESGATE PARK
to its former glory.**

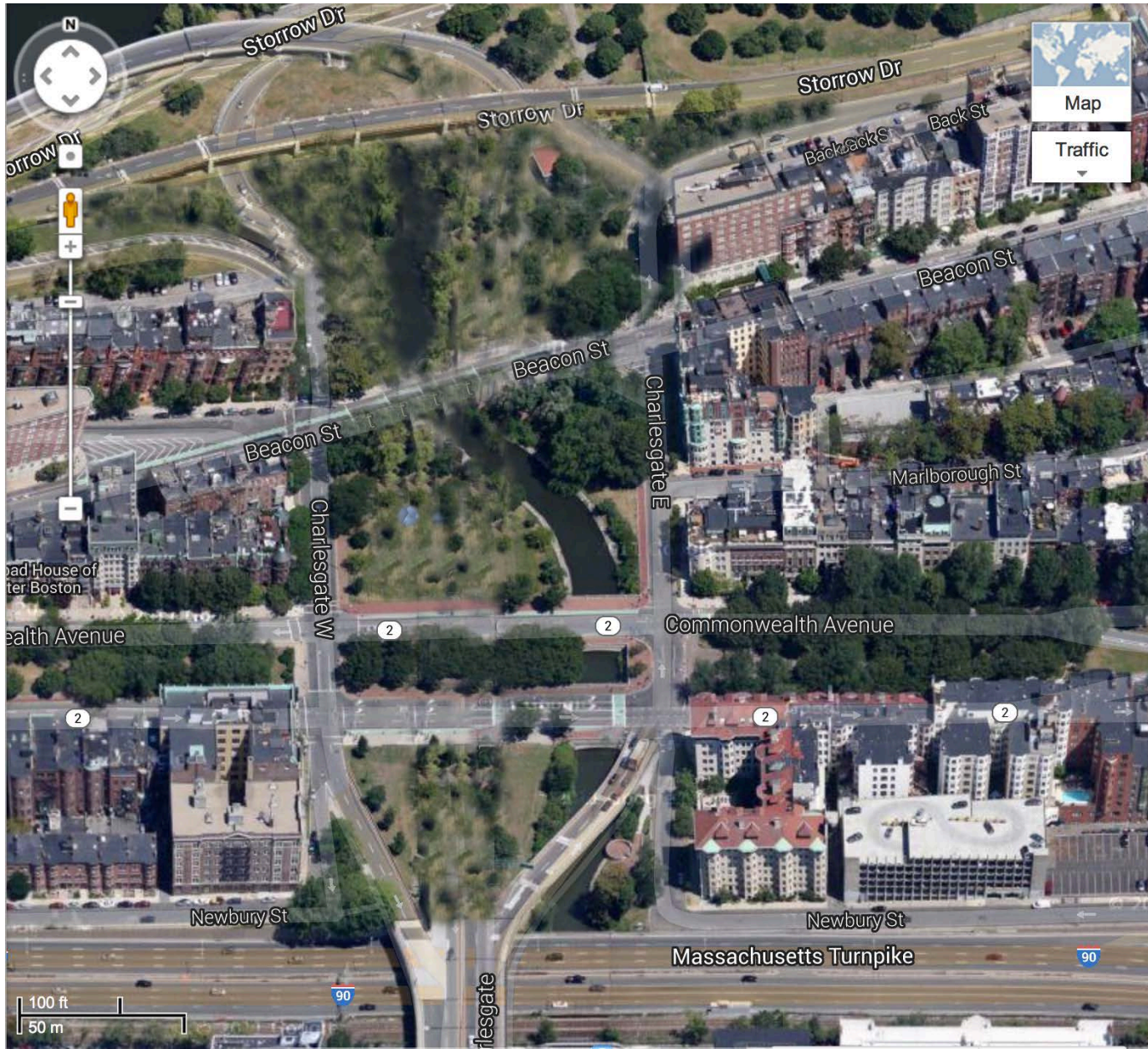
**Please join your fellow Bostonians in
taking back our neighborhood!**

**Help us restore this beautiful piece of
American history to its rightful place in
the center of our city!**

From This:



To This:



This is a win-win proposition!

The park is already there! We don't need to build anything! All we need to do is uncover it!

**Massachusetts would actually save money
– *millions of dollars* –
simply by demolishing the Bowker instead of
rebuilding it.**

**This is a historic opportunity to
liberate Charlesgate Park!**

**The pieces are coming together.
Now we need people to come together.**

**Let's rescue this gem
and restore it at the heart of this
great American city.**

CHARLESGATE PARK



Designed by Evan Hammond, Boston Architectural College